



---

# FARM & WILDERNESS

---

ANNUAL REPORT 2016



# JUSTICE FOR ALL



Equity is more than one of our values, it is the guiding principle in decision-making and organizational operations at Farm & Wilderness. The belief that a diverse community makes us stronger guides us as we:

- Nurture each camper's growing knowledge of self-identity as well as how they identify in a group.
- Promote each camper's comfortable, empathetic interaction with people from diverse backgrounds.
- Foster each camper's capacity for critical thinking about bias, inclusivity, and equity.
- Cultivate each camper's ability to advocate for others and themselves when they encounter bias and use the power of their voice and action to bring positive change.

We spend much time talking with our trustees, staff, and youth about fairness and thoughtfulness in our diverse community. We provide space for conversations about cultural appropriation (in name and practice); we guide camp staff to facilitate workshops on issues of inclusion and equity, while leading by example. At F&W, campers explore their identity and their impact in the community. Topics of gender, non-binary identification, and the construct of race are

commonplace. Young people are forging the tools for making sense of the questions they have, the world outside of F&W, and how to express their views and be heard with strength and conviction.

Much to celebrate in 2016:

- Our staff retention rate remained around 70%.
- Nearly 1,200 campers & staff joined us in 2016, 24% identify as persons of color.
- A record year for giving, as we enter the public phase of our Thrive for 75 Campaign.
- Indian Brook's 75th Anniversary and Dark Meadow alums wielded hammers to nail siding on the new Cozy Lodge, while some toured the site of the newly named "Red Spruce Grove" program near Ninevah.
- Strong enrollment, plus adhering to budgets, and another stellar summer of farm fresh crops bolstered us through the successful year.


As an F&W community that cares, we consider ways to support all our constituents and we seek equity for all; beyond our inclusive community, to wherever we find ourselves. Thank you for your work as part of our extended family. You enable us to thrive and make differences in the lives of our youth and families, for whom F&W provides a refuge, a recharge, social and emotional sustenance, and hope.

In peace,

*Janet Green*  
Janet Green, Clerk, Board of Trustees

*Rebecca Thomas Geary*  
Rebecca Geary, Executive Director



A young person with dark dreadlocks is the central focus, playing an acoustic guitar. They are wearing a white t-shirt with colorful cartoon graphics and a long wooden bead necklace. The background is a blurred crowd of people at what appears to be an outdoor festival or concert, with green foliage visible in the distance.

## BOARD OF TRUSTEES

---

Janet Green, Clerk • Cambridge, MA  
Joan “Cindy” Amatniek • Philadelphia, PA  
Will Anninger° • Philadelphia, PA  
Philip Berkman • Chicago, IL  
Steve Burwell\* • Brooklyn, NY  
Dusty Clitheroe° • Austin, TX  
Mindy Fullilove\* • West Orange, NJ  
Margaret Henry • Rockville, MD  
Amy Hunter • Newton, MA  
Morgan Jones • Queens, NY  
Zora Jones Rizzi • Arlington, MA  
Adam Keller\* • Lyme, NH  
Carol Leftwich° • Alexandria, VA  
David Lemmel° • Providence, RI  
Nina Lesser-Goldsmith • Huntington, VT  
Colin Mitchell • New York, NY  
Tonya Oya Orme • Cambridge, MA  
David Scherr • Burlington, VT  
Rebecca Steinitz • Arlington, MA  
Andrea Taylor\* • Wilmington, DE  
Kristi Webb • Chapel Hill, NC

\* Term began August 2016

° Term ended May 2016

## THE VISITORS' CIRCLE

---

The Visitors' Circle is an advisory board of community, non-profit, academic, and private sector leaders who are committed to supporting and advancing the mission of Farm & Wilderness. Members provide counsel to the Board of Trustees and staff, develop and strengthen relationships with alumni, parents, and friends, and foster philanthropic support for Farm & Wilderness.

Richard “Rox” Anderson • James Berkman  
McKey Berkman • Carol Browner  
Len Cadwallader • Caroline Cope  
Joan Countryman • Nicholas Donohue  
Susan Saint James Ebersol • Dan Elias  
Susanne Emory • Ian Gamble • Janet Green  
Rick Hausman • Bruce Katz • Roger Michel  
Bob Owen • Rich Parker • Burt Sonenstein  
Susan St. John • Adam Stern  
Jeffery Anne Tatum • Phil Villers

---

*On the cover: Red Spruce Grove is a close-knit, warm community of campers who embrace wilderness living, situated on a beautiful meadow plateau near Lake Ninevah.*





## FINANCIAL REPORT

2016 was another solid year for F&W's core operations. Our total program income, contributions, and investment income were higher than ever while our total expenses were unchanged from last year. At the same time, we also awarded more campership funds than we ever have.

We are grateful to the many supporters of our annual fund, campership fund, the capital campaign and other projects whose gifts helped bolster our financial position. For the first time in our history, our endowment is now well over \$5 million – a fourfold increase from ten years ago! As our endowment grows, the income from these investments grows as well, providing us with funding for camperships and general operations.

Capital improvements in this past year have improved campers' experiences. The new Cozy Lodge at Indian Brook is already a favorite gathering spot for campers, staff and Family Camp.

Our hard work to reduce greenhouse gas emissions over the past ten years has started to reap financial rewards as well. Despite inflation and an increase in the number of campers we serve, our utility (fuel, electricity, and trash removal) expenses are virtually unchanged from what they were a decade ago. Investment in our infrastructure and training has not only increased the safety of our camps but also decreased per capita insurance costs.

As F&W publicly announces our capital campaign, Thrive for 75, we are pleased to assure you of our financial health.

A stylized, handwritten signature in white ink.

**Tonya Orme**  
Treasurer

A stylized, handwritten signature in white ink.

**Jonathan Wilson**  
Chief Operating Officer

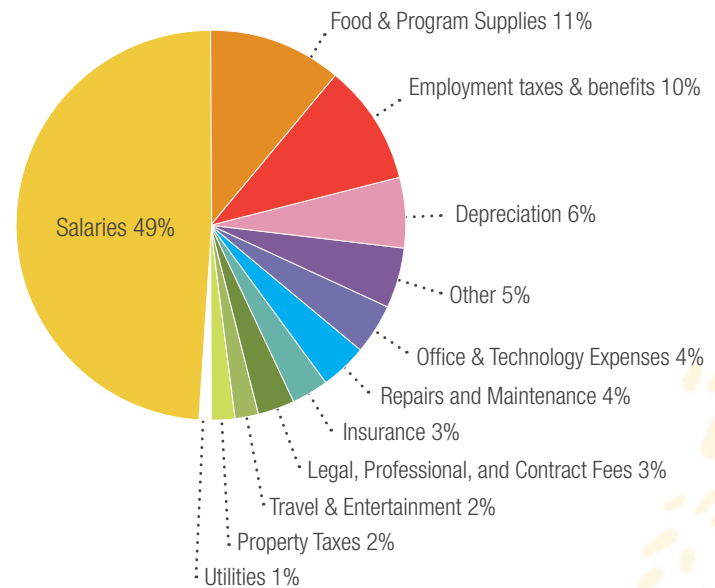
STATEMENT OF ACTIVITIES: FIVE-YEAR SNAPSHOT (from Audited Statements)

Year Ending	2016	2015	2014	2013	2012
<b>Operating Revenue</b>					
Tuition	\$3,725,844	\$3,645,115	\$3,545,002	\$3,397,714	\$3,082,911
Less discounts & camperships	\$(626,720)	\$(557,518)	\$(564,726)	\$(562,806)	\$(554,915)
Reservoir Rental Income (net)	\$314,830	\$314,342	\$309,432	\$241,605	\$221,100
Contributions	\$1,687,067	\$1,350,067	\$1,177,356	\$354,667	\$679,803
Investment Income	\$188,454	\$183,686	\$170,216	\$160,992	\$160,833
Other Revenue	\$263,792	\$233,597	\$284,314	\$230,622	\$303,128
<b>Total Revenue</b>	<b>\$5,553,267</b>	<b>\$5,169,289</b>	<b>\$4,921,594</b>	<b>\$3,822,794</b>	<b>\$3,892,860</b>
<b>Functional Expenses</b>					
Program Expenses	\$2,993,762	\$2,952,346	\$2,916,289	\$2,855,634	\$2,794,510
General & Administrative	\$997,025	\$1,047,058	\$1,114,940	\$921,158	\$919,156
Fundraising	\$379,363	\$410,201	\$337,190	\$271,531	\$132,431
<b>Total Expense</b>	<b>\$4,370,150</b>	<b>\$4,409,605</b>	<b>\$4,368,419</b>	<b>\$4,048,323</b>	<b>\$3,846,097</b>
Net Asset Change <i>(before other changes)</i>	\$1,183,117	\$759,684	\$553,175	\$(225,529)	\$46,463
Total Other Changes	\$132,630	\$(228,859)	\$140,304	\$472,420	\$185,401
<b>Total Change in Net Assets</b>	<b>\$1,315,747</b>	<b>\$530,825</b>	<b>\$693,479</b>	<b>\$246,891</b>	<b>\$231,864</b>

STATEMENT OF FINANCIAL POSITION

Year Ending	2016	2015
<b>Assets</b>		
Cash	\$126,122	\$254,736
Accounts Receivable	\$33,376	\$28,997
Pledges Receivable	\$1,006,699	\$1,000,221
Other Assets	\$96,261	\$98,186
Investments	\$5,557,587	\$4,547,172
Land, Buildings, Equipment	\$5,090,223	\$4,754,974
<b>Total Assets</b>	<b>\$11,910,268</b>	<b>\$10,684,286</b>
<b>Liabilities</b>		
Accounts Payable	\$46,646	\$86,018
Accrued Expenses	\$65,523	\$69,571
Unearned Tuition	\$746,559	\$811,400
Unearned Lease Fees	\$300,363	\$314,666
Bank Notes	\$240,477	\$207,678
<b>Total Liabilities</b>	<b>\$1,399,568</b>	<b>\$1,489,333</b>
<b>Net Assets</b>		
Unrestricted	\$5,585,925	\$5,186,372
Temporarily Restricted	\$2,629,796	\$2,482,621
Permanently Restricted	\$2,294,979	\$1,525,960
<b>Total Net Assets</b>	<b>\$10,510,700</b>	<b>\$9,194,953</b>
<b>Total Liabilities &amp; Net Assets</b>	<b>\$11,910,268</b>	<b>\$10,684,286</b>

USE OF FUNDS IN 2016





“I learned that I am a lot stronger than I thought I was. I now know that I am powerful and I am valued in my community. I learned that I enjoyed things I never thought I would enjoy, like using an ax or carving.”

-Red Spruce Grove Camper





## FARM FACTS

**200 gallons** of fresh F&W milk was donated to local food pantries

**9,287 pounds** of organic vegetables were grown: we've nearly **doubled** the amount of farm-fresh food provided to our camps since 2009



## CAMP FACTS

**638** overnight campers, 446 returning (70% retention)

**221** day campers, 132 returning (60% retention)

**21%** overall diversity rate

**12** represented their camp constituents as camper council members



## CAMPERSHIP

**\$420,050** awarded in camperships

**181** campers received camperships

**12%** increase in campership funds over 2015



## COMMUNITY HIGHLIGHTS

**936** community members donated more than **\$2,038,000** in 2016

**2 out of 3** donors are past and current camper families & alumni

**75 years** celebrated by Indian Brook at the Alumni Reunion





# 2017 SUSTAINABILITY REPORT

We have completed an annual greenhouse gas inventory since 2009. This process helps us understand our impact on the environment and practice better environmental stewardship, lessening our contribution to global climate change through responsible resource use. Analyzing resource use allows us to continue in our mission to live closely with the natural world in all areas of operations.

In many areas, Farm & Wilderness operates relatively “off-the-grid.” For example, composting all organic material, including human waste, and housing campers in cabins without electricity.

Additionally, we have been increasing efficiency within building operations. Continuing these operational initiatives, replacing inefficient appliances, using more efficient fuel to run these appliances, transitioning from fossil fuels to the use of F&W’s new solar capacity where possible, and retrofitting buildings to conserve energy loss from these appliances, will all contribute to further emissions reductions.

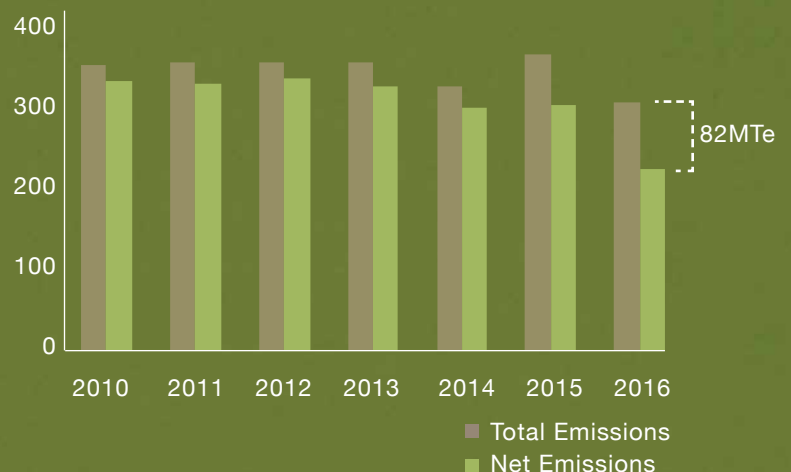


## A CLOSER LOOK: THE IMPACTS OF COMPOSTING

This chart displays the importance of F&W’s composting program as a greenhouse gas emissions offset. The brown shows total emissions, the green shows net emissions after subtracting the amount of emissions avoided by composting.

Farm & Wilderness’ aerobic composting program (turning compost regularly and monitoring the temperature) reduces the amount of greenhouse gases that would otherwise be released if those materials decomposed without intervention.

TOTAL V. NET GREENHOUSE GAS EMISSIONS, 2010-2016

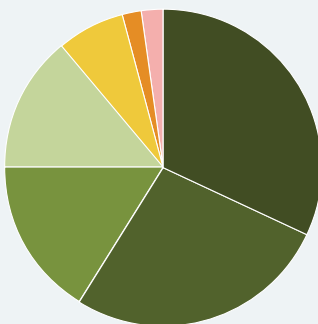


Composting at F&W resulted in the avoidance of **82 metric tons of CO<sub>2</sub> emissions**, or 27% of F&W’s total greenhouse gas emissions for 2016.



## GREENHOUSE GAS INVENTORY RESULTS

In 2016, F&W operations were responsible for the emission of **303 metric tons** of equivalent carbon dioxide (MTeCO<sub>2</sub>).



GHG EMISSIONS 2016  
363 tons CO<sub>2</sub>e

F&W organizes its greenhouse gas emissions into seven operational categories:

**Buildings:** Emissions from electricity, hot water, heat, refrigeration and cooking fuel.

**Vehicles:** Emissions from cars, trucks and vans owned by F&W.

**Agriculture:** Emissions from farm animals.

**Commuting:** Work-related travel by year-round staff.

**Air Travel:** Work-related travel by year-round staff.

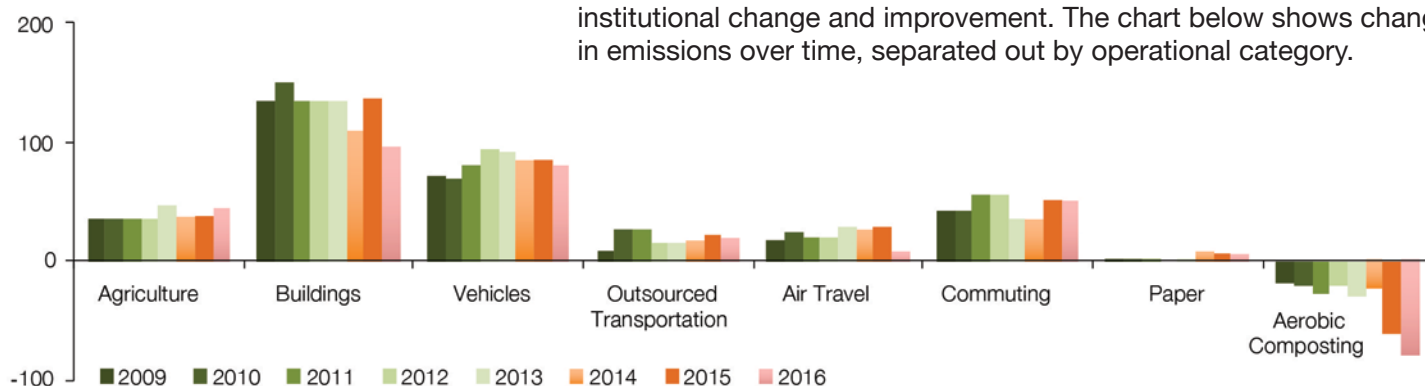
**Outsourced Transportation:** Work-related personal vehicle trips by year-round staff.

**Office Paper:** Total paper usage by F&W staff.



Our net emissions have  
**declined 24%** since 2009.

EMISSIONS BY OPERATIONAL CATEGORY  
2009-2016



While there has been a decline in total emissions, looking at F&W's operational categories separately helps make clear which areas have had the most meaningful impact on greenhouse gas emission declines, as well as which operational categories could most benefit from institutional change and improvement. The chart below shows changes in emissions over time, separated out by operational category.



# EQUITY IN ACTION

**38 campers** joined us in 2016 through our partnerships with 1199SEIU, Atlas: DIY, Vermont Refugee Resettlement Program, and 4Riise.

---

“This past summer we engaged campers in discussions about Black Lives Matter, brainstormed support for the incoming Syrian refugees in Rutland, VT, led protest song-writing workshops, painted positive graffiti all over camp and learned about the Bill of Rights. Any moment at Indian Brook can be a teachable one, whether it’s a chance to discuss the history of a particular song, challenge a camper’s assumptions about race, or learn about the many women and trans folk who have carried the torch of feminism before us.”

– Megan Chamberlain, Indian Brook Director

“We are all challenged to look at real-life issues and think critically about solutions we want to work toward within our own communities. Many times I witnessed the campers working so hard to create the space they wanted to live in (it wasn’t easy).”

– Amy Bowen, Tamarack Farm Director

“Partnerships provide F&W with some broader perspectives. They also create a more diverse community within our camps and working at our organization. Through these mutually beneficial relationships, we offer families and youth the opportunity to attend sleepaway camp and experience wilderness and farming through our varied camp programs.”

– Rebecca Geary, F&W Executive Director

---

*Top: Tamarack Farmers and staff responded to headline news with a moving performance at Interdependence Day.*

*Bottom: With 100 Syrian refugees expected to arrive in Rutland in 2016, Timberlake campers made them welcome gifts of handmade bowls, chairs, cutting boards and spatulas.*

“As we practiced our Interdependence Day skit in the meadows on our way to perform, I shared the news about Philando Castile and Alton Sterling— both unarmed black men—and five police officers in Dallas being killed over the previous days. Our skit, though full of comedy, also allowed us to make connections between the ‘Zombies’ and complacency with violence; ‘walls being built between camps’ and the lack of connection within our communities; the ‘poisonous candy’ and toxic media; and ‘boasting and camp elitism’ were perfect symbols of supremacy. It was a painful and confusing conversation with hardly a clear direction forward. However, it was wonderful to see the campers channel their emotions over the event and translate them into art.”

– Jeff Bounds, Saltash Mountain Director

“I feel I have a deeper connection with activist work and am more driven by empathy... This has been instrumental in forming a community with people I don’t have much in common with and helped me grow as a person.”

– Madeleine Jane Matz, Tamarack Farmer











## THE LEGACY CIRCLE

---

The Farm & Wilderness Foundation established the Legacy Circle to honor, appreciate, and recognize members of the F&W community who have included F&W in their estate plans. We are very grateful to the current members of our Legacy Circle.

Anonymous (4)

Ruth Berg

Leonard & Mary Ann Cadwallader

Sidney & Carolyn Cadwallader

Sylvia Edgerton

Beth Falk & Dan Herman

Fred & Mary Anna Feitler

Tom & Carol Ann Fisher

Seth Gibson

Charles & Charlotte

Penfield Gosselink

Katie Harris

Priscilla B. Hinckley

Catherine W. Hollis

Dr. Howard C. Hughes

Jack & Ruth Hunter

Arthur Kohn & Priscilla Laula

Christine & Christopher Ladd

Sarah Laughlin

Vicki & Daniel Lewis

L. Paul Lindenmaier

Janet W. Lowenthal

Colin Mitchell

Katie Morgan

Albert & Judie Muggia

Karen Beth Olch

Martin & Robin Oppenheimer

Rich & Chrissie Parker

Elsbeth Reagan

Carolyn Ristau & William Knight

William & Carol Schwarzschild

Nancy L. Seidman

Sara Somers

Nancy Spanier

Susan St. John & Robert Rheault

Jeffery Anne Tatum

Kurt & Eden Terrell

Kristi Webb & Todd Woerner

Martha Webb

Donald Weiman

Thomas & Sandra Williams



# A LIFE-SHAPING EXPERIENCE

FOR LEGACY CIRCLE MEMBERS JUDIE & AL MUGGIA



For Judie and Al Muggia, Farm & Wilderness has been a touchstone in their lives. Judie started at Indian Brook as a “Cricket” at the age of 6 in 1944, when campers and counselors numbered about 40 in total. She returned nearly every summer, first as a camper, then as a camp nurse and eventually as a camper parent.

Judie was inspired to become a Quaker by Susan Webb; she met her husband, Al, at F&W; their wedding was overseen by F&W founders Susan and Ken Webb; Judie and Al bought a cottage on Woodward Reservoir and used it year-round for 40 years. They sent their three sons to Timberlake and SAM and joined them at Family Camp. In short, the Muggia’s have shared more than seventy years with Farm & Wilderness.

And they have the stories to prove it. Al met Judie in the IB hayloft where Al found himself on the business end of Judie’s pitchfork. They’d been tossing bales aloft when the “accident” happened. Judie likes to joke she wanted to pin him down the minute she met him. Judie recalls a lot of shenanigans at F&W, “We’d go down early and put a bridle on different horses and then tear around the lake! We woke everybody up.” Then there was the time they woke to find a VW on the roof of IB’s Lodge!

The Muggia’s appreciate most how Farm & Wilderness has remained a unique and inclusive place over the past seven decades. Farm & Wilderness “teaches one to be comfortable with one’s self. And that’s why we sent all of our kids to the camp and they all had a good experience there,” recalls Al.


F&W provided other lessons as well. “Whenever we have a problem in the house whether it’s plumbing or electric or painting... Judie knows how to do it all. And it’s always that she learned how to do it in the camps,” says Al. Judie laughs, “Saved us a lot of money on those electricians and plumbers.”

In 2010, recognizing that the camps remain “a great source of happiness, independence, and experiential knowledge” Al and Judie decided to include F&W in their will and become Legacy Circle members. In 2012, they deepened their support for the camps by deeding their beloved Woodward Reservoir cottage to Farm & Wilderness, bringing it full circle, as they had purchased it from Ken Webb in 1976. Farm & Wilderness was a life-shaping experience for Judie and Al. “A remarkable, inclusive and safe place to be.”

“ [F&W] teaches one to be comfortable with one’s self. And that’s why we sent all of our kids to the camp and they all had a good experience there. ”

-Al Muggia





## CIRCLE OF LIGHT

---

The Circle of Light is an award given by the Board of Trustees to recognize distinguished service and a long-term commitment to supporting and advancing the mission of Farm & Wilderness. The following people have been recognized as members of the Circle of Light:

Will Anninger \*  
Sam Arfer  
Tom Barrup  
Nancy Bell  
McKey "Mac" Berkman  
Linda Berryhill  
Pieter Bohen \*  
Andrea Breen  
Len Cadwallader  
Arthur "Mickey" Carter  
Dusty Clitheroe \*  
Jack Hunter

Ruth Hunter  
Sonja Johansson  
Robert Owen  
Linda Randall  
Silos Roberts  
Kathy Schultz  
Susan St. John  
Jeffery Anne Tatum  
D. Kurt Terrell  
Kristi Webb  
Polly Williams  
Tom Williams

\* Honored in 2016



# F&W: A PARADISE AWAY

## THE MEEKS FAMILY SHARES THEIR STORY

“There is a paradise away from the hustle and bustle of normal life, a place where people actually get along and do things slightly different.” That’s how Michael Meeks, (TL ’69-’73, TF 74-’75, staff ’76-77), describes it. Michael, who was following in the footsteps of his older sister, Renelda (IB ’63, TF ’66, staff 67-74), along with brothers, Reginald (FC ’65-68, TF ’69, staff 70-71), Florian (FC ’65-67, TF ’68, Seaforth ’69) and Ken (TL ’74-75, FC ’76-78), says that F&W has had a profound effect on his whole family to this day.

All five of Eloise and Florian Meeks, Jr.’s children attended F&W in the 1960s and ’70s thanks to Ken and Susan Webb’s initiative to provide safe haven to children of the civil rights movement. In a 1975 letter to F&W, Eloise wrote, “It was the year of ’62 when the roots of our children first tapped the soil of the camps and each year since we have seen them grow and expand physically, mentally and spiritually.” She recounts “... the blessed invitation from the Webbs to bring children to camp early during the rioting in our city in the mid-60s.”

In 1962, Norm Williams was recruiting for Farm & Wilderness in Louisville, Kentucky. Renelda explains, “At that time there was an active civil rights movement to end “red-lining” which was to keep Black Americans from buying homes in non-Black neighborhoods. The camps invited children of parents involved in this struggle to attend these camps in another land (called Vermont) far, far away, so they could at least have a peaceful summer—away from the ugly day-to-day tensions.” She adds, “I will never forget the pictures and brochures he showed us. I pined for this camp where children sat on rocks and played musical instruments in front of a lovely lake.”

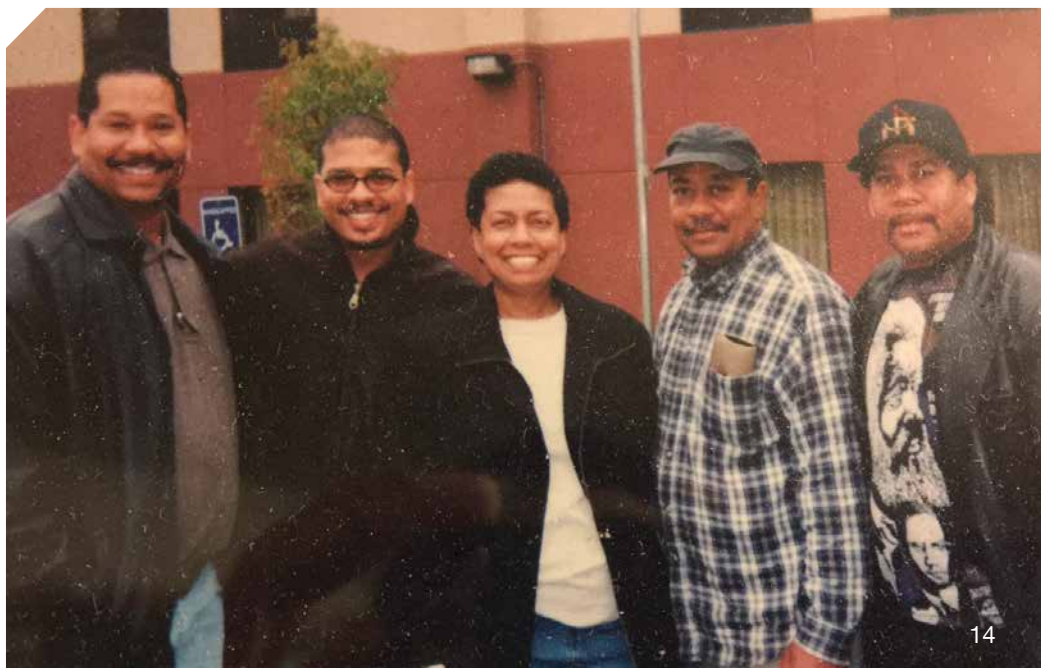
Farm & Wilderness was indeed a world away. Ken, the youngest in the family, attended Timberlake for two years and Flying Cloud for three. “You get the opposite of what you’re used to,” said

Ken. “You have to create everything. You chop down a tree and use it to build a fire; it warms you, it cooks your food. That’s what life is.” Now Ken lives “in the heart of hustling, bustling NYC – but at F&W I connected to the silence and I still feel connected to it, even today.”

Florian Meeks was one of a small group from F&W who attended the experimental Camp Seaforth in the Caribbean (’69). Over the years, Florian has regaled the family with stories of Seaforth. “We got to swim around some of the wrecks down there. I brought home a cannonball.”

The Meeks siblings have gone on to succeed in the world as activists, writers, politicians, and citizens, and they continue to give back to F&W through their service and as donors. Renelda, Reggie and Ken have served as F&W trustees. In 2016, Renelda decided to join the F&W Campfire Circle as a monthly donor to sustain campership support for the next generation of campers, and the family is supporting the Thrive for 75 Campaign in tribute to their parents who gave them the opportunity to attend F&W.

The camp’s influence on them has been immense and they have kept the tradition alive by coming back each year to the Fair and sending the next generation of their family to F&W. “It is incumbent for those of us who have experienced the joy and wonders of F&W, to support the experiences that we have treasured throughout our lives. We give to camp because camp has given so generously to us. “



*The Meeks siblings from left to right, Michael Lamont Meeks, Kenneth Wendell Meeks, Renelda Higgins Walker, Florian Meeks III, and Reginald Kline Meeks.*



“ As a camper, I learned so much about who I am and who I want to be. Getting a campership and being able to continue attending camp was such an amazing gift. ”

-BDC Staff

## OUR STAFF

Thank you to our amazing group of 2016 staffers. Please see the complete 2016 staff list on our website, [www.farmandwilderness.org/annual-report](http://www.farmandwilderness.org/annual-report)





# 2016 DONORS

F&W relies on the support of our alumni, camper families, staff and friends each year and we are grateful to those listed below for their gifts in 2016. We are also pleased to recognize those who have made 10 or more gifts to F&W.

## 10 to 49 lifetime gifts

Anonymous (9)  
Gail & Jeffrey Aaron  
Karen & Larry Abell  
Stuart & Benjamin Abelson  
Foundation Trust  
Abraham Adams  
Scott Adams & Samantha Garbers  
Kathleen Adams-House & Jeffrey House  
Melinda Agee  
Dylan Agli  
John & Leslie Akula  
Zev Alexander  
Joan Alker & John Walsh  
Michael Allen & Janice Kaplan  
Joy & Keith Alper  
Jeff Alpher & Haley Kaufman  
Rouwenna & Craig Altemose  
The Alvarez Family  
Hugo Alvarez  
Joan Amatniek  
AmazonSmile Foundation  
Connor Ambrose  
American Endowment Foundation  
Malaika Amon & Anthony Bregman  
Richard Anderson  
James Andrews & Brenda Liss  
William Anninger & Carol O'Donoghue  
Michael Ansara & Barbara Arnold  
David Appelbaum  
Apple Lane Foundation  
Natalia Appleweiss  
Maija Arbolino  
Samuel Arfer  
Richard & Ellen Armstrong  
Gael Arnold  
Margaret Arny & Janice Doppler  
Michal Aronson, Jules & Joshua Keitt  
Steve Atlas & Lestra Litchfield  
Addison & Janet Ault  
Bruce Austern & Tim Tierney  
Joy & James Axten  
Shelley Azumbrado  
Renny Babiarz & Amanda Gates  
Oliver Bacon  
Paul Bader  
Linda Bailey & Edwin de Bruijn  
Isabel Baird  
Bruce & Lucy Baizel  
Ben Baker  
Joan Balaban & Jonathan Landman  
Nancy Balaban  
Richard Balaban & Kim Shellenberger  
Emma Balazs  
Aygul Balcioglu & Geoffrey Dutton  
Elisa Moore Baldwin & Wes Baldwin  
Korotoumou Ballo

## 50 to 99 lifetime gifts

Michael Bancroft & Vicki Curry  
Bank of America Charitable Gift Fund  
Bank of America Charitable Foundation  
Lois Banta  
Duncan Barber  
Celia Barbour, Peter, George,  
Henry & Dosi Weed  
Sirkka & Hugh Barbour  
Ellen Barker & Daniel Schorr  
Allison Barlow & David Ochshorn  
Valerie Barr & Susan Yohn  
Laurel Barron & Robert Mendelsohn  
Richard & Carol Barron  
Lucy Bassett & Alex Taurel  
Edward Batchelder & Susan Senator  
Marilyn & Walter Baurle  
Coleman & Patricia Bazelton  
Allison Beer  
Kelly Beerman  
Peter U. Beicken  
C. Diane Bell  
Kathleen & Jeffery Bell  
Jean Bellow  
Ronaldo Bencid & Karen Schmeckpeper  
Olivia Benissan  
David S. Bennahum  
Janet Benton  
Sarah J. Berger  
Claire Berkman  
Daniel Berkman  
McKey & James Berkman  
Philip & Natasha Berkman  
R. T. Winston Berkman  
Richard Berkman  
Allen H. & Selma W. Berkman  
Charitable Trust  
Stanley & Harriet Berman  
Linda & John Berryhill  
Leander Bien  
Erik Bjornstad  
Elizabeth Bird & Betti-Sue Hertz  
Sean Bjornsson  
Jessica Blackman  
Charmarie J. Blaisdell  
Mose Blauner  
Anna Blaustein  
Susan & G. Scribner Bliss  
Eli Bloch  
Dutro & Lucille Blocksom  
Cynthia & Scott Blum  
John & Jennifer Boger  
Dave & Lucy Bogue  
Pieter Bohlen  
Shawn J. Bohlen  
Martin & Elaine Book  
Robert Borgen

## Campfire Circle recurring donor

George Bossarte  
Matthew Botvinick & Amory Meigs  
Jeffrey Bounds  
Doris Bouwensch  
Amy & Sten Bowen  
Daron Boyce  
Anais Boyd  
Taylor & Maria Boyd  
Anne Bracker & Jefferson Singer  
E. Michael Brandt & Mary Bowne  
Christine & Jens Braun  
Nancy Braxton  
James & Alice Breed  
Andrea Breen & William Perkiss  
Robert L. Brevillieri Trust  
Bridgemill Foundation  
Camilla & David Brinkman  
Miriam Bronstein & Lev Kling-Bronstein  
C. Baird & Carol Brown  
Carolyn Brown & Douglas Gasner  
Eliot Brown  
Peter & Jill Brown  
Richard Brown & Anita Loose-Brown  
Sophia Brown  
Carol Browner & Thomas Downey  
Tullo Browning & Juliet Skeet  
Ellen Bruce & Richard Segan  
Emily Bruell & Christopher Ruigomez  
Leo Bruell  
Melissa K. Buhler  
Kelsea Burch  
Elliot & Sara Burch  
Abigail Burford  
Betty Burkes  
Emily & Chris Burns  
Daniel & Jill Burstein  
Richard Burst-Lazarus  
Steve & Heide Burwell  
Leonard & Mary Ann Cadwallader  
Pam Calabrese  
Rosalie Calabrese  
Anne Camp & John Flanders  
Hannah Campbell  
Suzanne Campbell & Hugh Johnson  
Mario Capecchi & Laurie Fraser  
Maxwell Carine  
Rebecca & Irad Carmi  
Carnegie Corporation of New York Matching  
Gifts Program  
Tim Carry & Jean Manning  
Rebecca & Jon Carson  
Emily Carsten  
Estate of Maria Carter  
Julian Castro  
Luke Cate  
Gordon Celliers  
Center for Popular Democracy  
Brenda Chalfin & Daniel Smith  
Sonia Chalfin & John Wakeley  
Rose Chalfin-Wakeley  
Michael Chalker & Donna Liparulo  
Megan Chamberlain  
Chandler-Shreve Family Fund  
Henry Chapin & Elizabeth Blachly Chapin  
Laura Chenven & Peter Bunten  
Ellen Chesler & Matt Mallow  
John Chester & Laurie Poole Chester  
Hayden Chichester  
Chico's Fund  
Marvin, Ellen, Rachel & Laura Ciporen  
Rachel Ciporen  
Jonathan & Kitty Clark  
Aquadia Clarke  
William & Bonnie Clarke  
Henrietta T. Clews  
Margaret Clews & Paul Nakroshis  
Dusty, Scott, Justin, Tori & Will Clitheroe  
Laurel & Aaron Coburn  
Jeanne & Ronald Cohen  
Miriam & Jeff Cohen  
Lorraine Colburn  
Barbara W. Collamore  
Juliet Collingwood & Brian Ingle  
The Community Foundation for  
Greater New Haven  
Community Foundation of New Jersey  
Richard & Susanrachel Condon  
Mary Conklin-Callow & James F. Callow  
Sharon & Steve Conway  
Lee Cook & Chris Cass  
Peter B. Cook  
Emma Coolidge  
Joyce Cooper  
Edward & Caroline Cope  
Maya S. Corbett  
Sean, Gail, Ian & Madeline Corcoran  
Hayley Cort & Genevieve Cort-Grasso  
Joan Countryman & Edward Jakmuah  
Rachel Countryman & John Bracker  
Miles Crabtree  
Jay Craven & Elizabeth O'Brien  
Walt Crimm, Deenah Loeb,  
Jonas & Emma Crimm  
Jean & Michael Cummings  
Gail Cunningham  
David Dalgarno & Brenda Hochberg  
Todd Daloz & Susannah Walsh  
Aaron Daniels  
Amy Darley & Avram Patt  
Donald Davidson  
John T. Davis  
Walter & Meg Davis



Charles, Nicholas, Evan de Sieyes & Carol Ward 🌱  
 Karin de Vries 🌱  
 Jesse Deen  
 Neal DeLaurentis  
 Dell Employee Giving Program  
 Donald & Margaret Dempsey  
 John G. Dent 🌱  
 Rosanna J. Dent  
 Edward DesMaisons 🌱  
 Edward Dewees  
 Robert & Cheryl Dewees 🌱  
 William & Ellen Dickson  
 Janet Dillon 🌱  
 Alan Dimen & Beverly Bense 🌱  
 Elizabeth Dixon & Greg Marra  
 Thea Dodds  
 Meghan Doherty  
 Maisie Dolan  
 Andrew B. Dolsak  
 Gideon & Nitza Dominitz 🌱  
 Kate Doniger & Olivia Peoples  
 Harold & Nina Drooker 🌱  
 Laurel Dumont & Kyle Rosenkrans  
 Moxie Duncan-Tessmer  
 Sage Dunham  
 Doug Dunlap  
 Mary R. Duplisea-Palmer 🌱  
 Anna Durning  
 The Durning Family  
 Douglas & Priscilla Eakeley  
 Jane & Willard Eastman  
 Barbara L. Edelman  
 Bob & Elizabeth Edgerton 🌱  
 Nina Edgerton 🌱  
 Walter H. Effron 🌱  
 Amy Ehrlich & Henry Ingraham 🌱  
 Krista K. Eickmann  
 David Eidenberg 🌱  
 Helen & William Eigabroadt 🌱  
 Eisenbud Family Fund 🌱  
 Caroline & Richard Ekman 🌱  
 Daniel Elias & Karen Keane 🌱  
 Sylvia & John Eliot  
 Charles Elster & Myrna Zambrano 🌱  
 Susanne & Clay Emory 🌱  
 Brett Engstrom & Betsy Brigham 🌱  
 Dawson Engstrom  
 Langston Epps  
 Jane & Mark Epstein  
 Justine Epstein  
 Stephen Ervin, Valerie Perkins & Brielle Ervin  
 Margaret Robison Espinola 🌱  
 Jasmin Estrada Levenson  
 Beth Falk & Dan Herman 🌱  
 Jane Fankhanel & Roger Burkhardt 🌱  
 Aodan Farrelly  
 Rachel Farrington & Peter Dickson  
 Jules Feeney  
 Fred & Mary Anna Feitler 🌱  
 Barton & Cathy Fendelman 🌱  
 Helaine & Burton Fendelman 🌱  
 Jonathon & Carolyn Fendelman 🌱  
 Claudia P. Fennell 🌱  
 Fidelity Charitable Gift Fund  
 Alan & Yukie Fiedler  
 Leslie G. Fields  
 Anna J. Fincke 🌱

Ben Finley  
 Christopher & Elizabeth Finley  
 Steven P. Fischer  
 Jules Fishelman & Rachel Siegel  
 Thomas & Carol Ann Fisher 🌱  
 Jen Flaster 🌱  
 Patricia & Ward Fleming  
 Maya Flessas  
 Colin Flynn  
 Dashiell Flynn & Reena Mehta  
 Roger & Tonya Flynn  
 Samuel Fogel  
 Ford Foundation 🌱  
 Joel Forman & Dora Galacatos  
 Julie & Forrest Forsythe  
 Lee Forsythe & Molika Suy Forsythe 🌱  
 Sarah Forth & Joseph Maizlish 🌱  
 Robert & Helen Foss 🌱  
 Lucius & Rhonda Fowler  
 Laura Fox 🌱  
 Dakota FoxTree-McGrath  
 James & Leslie Frank  
 Richard Frank & Katie Capelli  
 Samuel Frank 🌱  
 Fred & Diane Frankel  
 Maria French & Jonathan Miller  
 Geoffry Fried & Joanna Bodenweber 🌱  
 Laura & Jeffrey Friedman  
 Alvin & Virginia From 🌱  
 Mindy Fullilove, M.D. 🌱  
 Jonathan Furlong  
 Michael & Debbie Gaines  
 Betty Gardescu 🌱  
 Arthur Gardiner & Robin Nuse 🌱  
 Joan & John Gardiner  
 GE Foundation 🌱  
 Rebecca Geary 🌱  
 Sabine Geary  
 Leopold R. Gellert Family Trust  
 Ann-Mari Gemmill & Mitchell Ratner 🌱  
 Janet & Michael Gersh 🌱  
 Christine Gibbs  
 Roland & Elizabeth Gibson 🌱  
 Nathaniel Gibson  
 Seth Gibson 🌱  
 Rebecca Givan  
 Amos Glick 🌱  
 Morris Gold  
 Megan Golden  
 Michelle Golden & Helen Onthank 🌱  
 Charles & Jane Goldman 🌱  
 Richard, Toni, Ruth & Joan Goldsmith 🌱  
 Ruth E. Goldsmith 🌱  
 Ira Goldstein & Linda Samost  
 Naomi Goldstein & John Bushman 🌱  
 Clement Goodman  
 Thomas N. Goodrich 🌱  
 Sathya & Andrea Gosselin  
 Charlotte & Charles Gosselink 🌱  
 James Phineas Gosselink  
 Rachael Graber  
 Raymond & Andrea Graj  
 Alexander Grattery-Musinsky  
 Jeffrey Gratz & Susan Buchsbaum 🌱  
 Margaret Graustein & Sebastian Rossi 🌱  
 William Graves  
 The Greater Cincinnati Foundation  
 Janet & Allan Green 🌱  
 Richard & Clara Green

Samantha Green  
 Green Mountain Power  
 Green-Shea Charitable Fund  
 Rona H. Gregory 🌱  
 Dan Grossman & Sarah Bansen  
 Daniel Grossman  
 Elizabeth Guernsey  
 Evan Guillemin  
 Meghan & Jay Gump 🌱  
 Alejandro Gutierrez & Lucia Skwarek  
 Jeff Haas & Mariel Nanasi 🌱  
 Melinda Hackett 🌱  
 Allen & Janet Haddad  
 Julie Haddad  
 Nicholas Haddad & Susan Flint  
 Henry & Mary Hagerup  
 Deborah Hall 🌱  
 John Halle & Marka Gustavsson  
 Linnea Halsten  
 Hans Detlef Hameier  
 Susan Hammond & Jonathan Baker 🌱  
 Harry & Cindy Handler  
 Marilyn Hanichak  
 Catherine Harris & Andres Rodriguez  
 Maura Harway & Richard Mark 🌱  
 Craig Harwood  
 Nate Hausman 🌱  
 Richard & Emily Hausman 🌱  
 Bruce & Ruth Hawkins 🌱  
 Patricia Hawkins  
 Sophie Hawkins & Balbinder Bhogal  
 Eileen Hayden  
 Natasha T. Hays 🌱  
 Anastasia Haytko  
 Lucas Heald  
 Sara Heiberger & Jeffrey Sawyer 🌱  
 Heimbinder Family Foundation  
 H. Peter & Joann Heinz 🌱  
 Jeffrey Heller  
 Hemenway Trust Company LLC  
 Margaret Hempel & Walter Hook 🌱  
 Amy Henderson, John, Harold & Ella Fuson 🌱  
 Edith & George Henderson 🌱  
 Craig & Mary Henderson 🌱  
 Sue Hendrickson & Rob, Jason, Sarah & Katie Kohn  
 Mary & Daniel Hennessey  
 Margaret & Andrei Henry 🌱  
 Anne G. Hereford  
 Elizabeth Hernandez  
 Abigail Herscovici  
 Steven Herscovici & Tracy Bare  
 Patricia Higgins 🌱  
 Renelda Higgins Walker 🌱  
 Faith Hill  
 Allen Hilles Fund  
 Priscilla B. Hinckley 🌱  
 Susan Hincley-Porter & Philip Porter 🌱  
 Anne Hintermeister & Bruce Wells 🌱  
 Stephen Hirsch & Mary Rait  
 Daniel & Gina Hirschhorn  
 David and Barbara B. Hirschhorn Foundation 🌱  
 Charlotte Hitchcock  
 Nancy Hoch & Eugene Glickman  
 The Hodges Family  
 Anita & Axel Hoffer  
 Daniel Hoffer

David & Deb Hoffer 🌱  
 Catherine W. Hollis 🌱  
 Valerie Hollis 🌱  
 George & Laura Honig  
 Roger & Ann Hooke 🌱  
 Asa Hopkins  
 Mark Horowitz & Jennifer Senior  
 Robert Houghteling & Elizabeth R. Fishel 🌱  
 Frederick Howard  
 Geery Howe & Jane Cadwallader-Howe 🌱  
 Jacob Howe  
 Samuel F. Howe 🌱  
 Warren & Hedy Howe 🌱  
 Berta Huerta & Jorge Villavicencio  
 Amy Hunter 🌱  
 Jack & Ruth Hunter 🌱  
 Clare Huntington & Nestor Davidson  
 Edgar & Judith Hurley  
 Ruth & Ernest Hurwitz 🌱  
 Angela & Matthew Hyatt  
 Jacob Iarussi  
 IBM Employee Services Center  
 Brian & Susanne Inglis  
 Katherine Inman  
 International Human Rights Funders Group  
 Investor Solutions, Inc.  
 Edward Ioffreda & Mari Jo Winkler-Ioffreda  
 The Ives Family Charitable Trust  
 Abraham & Arlene Jaffe 🌱  
 Elinor & Chris Jaikaran  
 Martha J. Jensen 🌱  
 Matthew Joffe  
 Colin E. Johnson 🌱  
 Pablo Johnson  
 Chuck & Sally Jorgensen  
 Mimi & David Jose 🌱  
 Tim Jursak  
 Just Give 🌱  
 Ethan Kahn  
 Gina Kaiser 🌱  
 John Kalapos  
 Janet Kalapos-Corrigan & David Corrigan  
 Jonathan Kaplan  
 Yelena Kardonskaya & Johnson Ho  
 Thomas Karr  
 Rebecca Karush & Robert Audette  
 Dale L. Keairns  
 Kerry Keane & Liane Thatcher  
 Adam & Marcia Keller  
 Lynn Keller 🌱  
 Claudia Kelley  
 Patricia M. Kelly 🌱  
 Gabriel Kerbs  
 Mark & Phyllis Kessler  
 Ella Kilpatrick Kotner  
 Anne Kirby  
 Daniel Klatz & Caitlin McKinnell  
 Benjamin Klebanoff  
 Victor Klebanoff & Danielle Greenberg 🌱  
 Joseph Klein & Elizabeth Ziegler  
 Richard Kleinschmidt 🌱  
 Jan & Cindy Klotz 🌱  
 Daniel Klubock & Dorothy Miller 🌱  
 Richard Knapp & Susan Korytkowski 🌱  
 Arthur Kohn & Priscilla Laula 🌱  
 Jason Kohn  
 Stephanie & Jeff Kopf  
 Sarah Koppelkam  
 Michael Kozuch





Katherine Kruckemeyer & Catherine Spath 🍀  
 Kenneth Kruckemeyer 🍀  
 David, Wendy & Toby Kuhn 🍀  
 Jay Kullman 🍀  
 Ruth Kunstadter  
 Robin G. Kutner 🍀  
 Jonathan Kwak 🍀  
 Christopher & Christine Ladd  
 Meredith Ladov  
 Laguna Beach Community Foundation  
 Frank & Maria Lamson 🍀  
 Nikka Landau & Peter Beaugard  
 Isaac Landman  
 Geraldine Lang 🍀  
 Jon Lang 🍀  
 Eleonora B. Lanza  
 Michael Lapham & Amanda Burton 🍀  
 Hannah Larney  
 Larsen Fund  
 Sarah Laughlin & Peter Krusch  
 James Lazarus & Susan Gershenhorn 🍀  
 Gladys and Ralph Lazarus Foundation  
 Mary & James Leahey  
 Thomas Leahey & Family  
 Kerry Leavenworth  
 Margaret Lechner 🍀  
 William Lee & Terry Tang  
 Carol Leftwich & Phil Hayden  
 Marla & Nicholas Lembo 🍀  
 David Lemmel 🍀  
 Paul Leonard & Amanda Feinstein  
 Janet Leslie & James Anderson 🍀

Richard Lesnick & Arney Garber 🍀  
 Katy Lesser  
 Nina Lesser-Goldsmith 🍀  
 Ursula Levett  
 Craig Levine & Phoebe Farber  
 Dorothy Levinson  
 Eleanor Levinson  
 Mira Levinson  
 Martha & George Levites  
 Marcos & Turiya Levy  
 Philip & Linda Lidov 🍀  
 Naomi Lindenfeld  
 Janice & David Linehan  
 Elizabeth Linsey  
 Derrick Lipschitz  
 Benjamin Little 🍀  
 George T. Little  
 Katherine J. Little 🍀  
 Ivory Littlefield & Lisa Epstein  
 Cynthia H. Livingston 🍀  
 Julia Llanes-Kidder  
 Christopher Lloyd & Vassie Sinopoulos  
 Rebecca Locke & Eric Sillman 🍀  
 Michele Lord  
 John & Susan Louchheim  
 Daniel P. Loucks 🍀  
 Susan L. Loucks 🍀  
 Shoshana Lovett-Graff  
 Roger Lowenstein  
 Lowenstein Sandler LLP  
 Janet W. Lowenthal 🍀  
 Michael Lowenthal 🍀

Oneido Luis  
 Maxine & Jonathan Lurie 🍀  
 Lucy Lydon  
 Elizabeth & Dwight Madison  
 Emma Maiden  
 Maine Community Foundation -  
 Ash Point Fund  
 John & Barbara Maisel 🍀  
 William & Geri Malandra 🍀  
 Jean Mallary 🍀  
 Geri Mannion  
 Alexandra Manou  
 John Marius & Christina L. Erickson  
 Nicholas Marshall & Kathleen Flynn  
 David S. Martin 🍀  
 Maya Martin  
 Sunshine & Emily Mathon 🍀  
 Allen & Glenda Maurer 🍀  
 Jeffrey Maxson & Anne Ferguson  
 John & Nathalie May  
 Jack & Chip Mayer 🍀  
 Todd & Charlotte Maynard  
 Brian McAllister  
 Jennifer McCann & Megary Sigler 🍀  
 Stephen McConnell  
 James Watt McCormick 🍀  
 Timothy & Phoebe McCosker 🍀  
 Kelly & Joseph McDonald  
 Ray & Colleen McDuffie  
 April McIlwaine  
 Rosemary McInnes  
 Patricia McNamara & Robert Wheelock

Elinor Meeks  
 The Florian and Eloise Meeks Trust  
 Anna Meier  
 Andrew & Lucy Meigs 🍀  
 The Merck Foundation  
 Peter Meyer & Amelia Koch 🍀  
 Ann & Charles Mick 🍀  
 Andrea & Zach Miller  
 Robert & Jean Miller 🍀  
 Alison Mills  
 Andrew H. Mills 🍀  
 Richard & Natalie Mines  
 Mary Mintzer 🍀  
 Anne Mitchell & Phillip Hershberger 🍀  
 Colin Mitchell 🍀  
 Christopher Moncrief 🍀  
 Christian Moniz  
 Marie Monrad  
 Morel Family Fund  
 Scott Morrow & Carol Amico 🍀  
 Elizabeth Morse  
 Sarah & Matthew Morse  
 Allan Moses  
 Michael Mosley  
 Ramin Mozghani  
 Karen & Gary Mueller 🍀  
 Matthew Mueller  
 Gayle Muenchow & Richard Hopkins 🍀  
 Albert & Judie Muggia 🍀  
 Fredi & George Munger 🍀  
 Aida Muratoglu  
 Stephen Murphy 🍀



Precious Mushwana  
 Nina Musinsky & Jean-Claude Gratterry  
 Tasiyana Mutizwa  
 Doug, Fran & Charlotte Nadel  
 Margaret Nankivell 🌱  
 National Philanthropic Trust  
 Phil Neisser 🍷  
 Martha Nelson & Kristine Peterson  
 Network for Good  
 Christopher Neville & Sarah Gamble 🌱  
 The New York Community Trust  
 Jesse Newcomb  
 Liisa Niemi-Kissel  
 Sonia & Angel Nieto 🌱  
 Ellen Nissenbaum & Jeffrey Colman  
 Luvuyoleuthu Njenjani  
 Andrea & Christopher Nolin 🌱  
 Northern Trust Charitable Giving Program  
 Sarah J. Norton 🌱  
 Robert & Harriet Noyes 🌱  
 Mark Obrinsky 🌱  
 Susan Ochshorn 🌱  
 Anthony & Angela Ocone  
 Karen Beth Olch 🌱  
 Paul & Wendy Olson  
 One OC  
 Kelly O'Neill  
 Emilia Onthank  
 Gabriel Onthank  
 Open Society Institute Matching  
 Gift Program  
 Martin & Robin Oppenheimer  
 David & Lucy Ordoobadi 🌱  
 Tonya Orme & Orhun Muratoglu  
 Mandy Osborne & Ellis Traver  
 Elisa Otter  
 Robert & Barbara Owen 🌱  
 Nicco Palazzi  
 Donald & Virginia Palmer 🌱  
 Eugene Palmer & Hali Croner  
 Jeannine Palms & Dale Petty 🌱  
 Charles Parker  
 Ralph Parker  
 Richard & Christina Parker 🇺🇸  
 Jack Parziale  
 Mark Pasternack & Judy Meyers 🌱  
 Hannah Patterson  
 Nora Paul-Schultz  
 Cynthia & Peter Peavoy 🌱  
 Lydia Pecker & Carl Johnson  
 Mark Pecker & Betsey McGee 🌱  
 Rachel Pecker & Bill Yukstas  
 Abby Pelton 🌱  
 PEPSICO Foundation 🌱  
 Marissa Perez  
 Robert Perry  
 Beverly Peterson 🌱  
 KC Phillips  
 Charlie Pillsbury 🌱  
 Leah Pillsbury 🌱  
 Lydia Pillsbury & Jesse Drummond 🌱  
 Marilyn Pirkle 🌱  
 Robert Piteo  
 Samara S. Plambeck  
 David Platt & Anne Nissen  
 Plymouth Historical Society  
 Pamela Podger & John Cramer  
 Zachary Podhorzer 🌱  
 Laurie & Michael Pollock 🌱  
 Maribeth & David Pomerantz

Margaret Pond & James Rader 🌱  
 Tricia Pool  
 Irwin & Melissa Post 🌱  
 Gideon Potter  
 The Levenberg Potter Family  
 Jerry & Linda Powell  
 Emmett Powers  
 Ilene Price 🌱  
 Mark & Judith Price  
 Patrick Proctor 🌱  
 Anastasia Pulak  
 Rock Pulak & Alice Rushforth  
 Patricia Puritz  
 Kate & Erik Quarfordt  
 R & R Foundation 🌱  
 R.C. Brayshaw & Company, Inc.  
 Katherine Rabinowitz & Rameshwar Das  
 Christine Ramsey  
 Faheem Rasool & Neda Shahhosseini  
 Elspeth M. Reagan 🌱  
 Yigal Rechtman & Hara Person 🌱  
 Samuel Reid-McKee  
 Sue Rennels 🌱  
 Griffith & Pamela Resor 🌱  
 Phillip & Catherine Resor  
 The Jonathan E. Rhoads Trust 🌱  
 Helen & Andrew Richards-Peelle  
 Kim Richman  
 Jack & Cassandra Richter  
 Stephen Rickard  
 Victoria & Martin Rico 🍷  
 Rodney Ripps & Nancy Finton  
 Sylvia Ripps 🌱  
 Carolyn Ristau & William D. Knight 🌱  
 Zora, Addie, Wilder & Ysaye Wyman Jones  
 William Robb  
 Donald Robbins 🍷  
 Silos & Camilla Roberts  
 Marilyn Roberts 🌱  
 The Rock/Sellers Family  
 Daniel & Irene Rodgers 🌱  
 Shadi Rohana  
 Patricia Rohrer & William Warren  
 Florence Roisman  
 Gregory & Kate Rolland 🌱  
 Kyle Rolnick 🌱  
 Paul Rolnick & Sabina Barach 🌱  
 Daniel Rood-Ojalvo  
 Deborah Roose & David Snyder 🌱  
 Gretchen Roose 🌱  
 Roose-Snyder & Keller Family  
 Fidel Roque Flores  
 Myra Rosa  
 Gerald Rosenberg & Bonnie Koenig 🌱  
 Kirstie & Micah Rosenfield  
 Benjamin Rosenthal & Nancy Martin  
 Rita Ross  
 Jeffrey Roth & Joanna Katz 🌱  
 Tim & Amy Rowe  
 Andy & Emily Roz  
 RSF Social Finance - Sparks Fund  
 Roberta Rubin & Donald Abrams 🌱  
 Douglas Rubino  
 Catherine Ruckelshaus & John Sadik-Kahn  
 Philip & Christine Rundus 🌱  
 Andrew & Heather Rutledge  
 Barbara Rutledge 🌱  
 Arthur & Mary Sachs 🌱  
 Elisabeth Sackton & Elizabeth Coolidge  
 Philip & Catherine Saines

Ryuichi Sakamoto & Norika Sora 🌱  
 Jordan Salei  
 Elmer Salinas  
 Kilmer Salinas  
 Jeff Salinger & Tracy Gary  
 Joshua Sampayo  
 Colin C. Samuel  
 Susan Sanders & Jeff Kisseloff  
 Jean G. Sanderson 🌱  
 Julie Sanderson 🍷  
 John, Linda & Eric Sargent  
 Ellen H. Satterthwaite 🌱  
 Ridge Satterthwaite & Sally Gage 🌱  
 Abby Schaefer & Larry Orfaly 🌱  
 Lisa Schamberg & Patrick Robins 🌱  
 Sylvia & Barry Scherr  
 David A. Scherr 🌱  
 Eric Scherzer & Barbara Reisman  
 James H. Scheuer, Jr. 🌱  
 Edward F. Schiele  
 Mallory Schmackpfeffer  
 Peter & Nancy Schnaittacher 🌱  
 Jonathan Schoder  
 Amy & Benedikt Schroeder 🌱  
 Abby Schultz & Ken Brown  
 Katherine Schultz & David Paul 🌱  
 Andrew Schulz & Mauri Small 🌱  
 Schwab Charitable Fund 🌱  
 Adam Schwartz & Sarah Levine 🌱  
 Pamela Schwartz & Joel Feldman  
 Barbara Scott 🌱  
 Jill Seaman-Chandler & Beth Chandler  
 Douglas & Suzanne Sears 🌱  
 Ellen Seeger  
 Robert & Charlotte Seeley 🌱  
 Nancy Seidman & Claude Barden 🌱  
 Martin & Janet Seltman 🌱  
 Seventh Generation Foundation Inc  
 James & Judy Sewell 🌱  
 Raphael Shamas  
 Elizabeth & Jim Shands  
 Jean M. Sharf 🌱  
 Brody Sharoff  
 Michael & Julia Sher  
 Lily Sher  
 Eva & Nicholas Shestople 🌱  
 Elana Shever & Jonathan Levine  
 Diane & Pete Shifflett 🌱  
 Judy Shopp  
 Andrew Siegel 🌱  
 Linda Siegel & Nick Brustin  
 Elliott Siegreest-Jones  
 Analiese Sigelko  
 Ariel Siller & Ethan Siller  
 Sills Family Foundation  
 Robert & Roberta Silman 🌱  
 Ira Silverman & Tracey Hohman  
 Gina M. Silvester  
 Lamar Sims  
 Adrian Singleton  
 Kaila Skeet-Browning  
 Samantha E. Skove 🌱  
 Satch Slavin & Julie Hess  
 Caleb Smith  
 Katharine M. Smith 🌱  
 Kathryn Smith & John Frizell  
 Robert & Ellen Smith 🌱  
 Sarah Smith  
 Lanier Smythe 🌱  
 Lev Snyder

Steven Snyder & Helen Spencer-Snyder  
 William F. Snyder 🌱  
 Sobel Affiliates - A Brown &  
 Brown Company  
 Sara Somers 🌱  
 Jean & Harold Somerset 🌱  
 Burton & Freya Sonenstein 🇺🇸  
 Mark Sonnenfeld 🌱  
 Pravir Sookhoo  
 John Spiegel 🌱  
 David & Leine Spohngellert 🌱  
 Susan St. John 🇺🇸  
 Jay Curt Stager  
 Donald & Ingrid Stanley  
 State of New York Supreme Court -  
 Kings County  
 Terry Staudenmaier & Dan McCarthy  
 William Steckman  
 Charles Steenburg  
 Nancy H. Steenburg 🌱  
 David Stein  
 Eden Steinberg & Peter Muz  
 Harold & Mimi Steinberg Charitable Trust  
 Rebecca Steinitz & Samuel Putnam 🌱  
 Zevey Steinitz & Charlie Heath  
 Charlotte & Alfred Steinmetz  
 Lyrica Stelle  
 Adam C. Stern 🌱  
 Robert & Virginia Stern 🌱  
 Ian & Maren Stevens 🌱  
 John A. Stevens 🌱  
 Rachel Stievater  
 Starr & Bill Stixrud  
 Paul & Frances Stone 🌱  
 Doug Stormont  
 Gabriel Strasburger  
 Dan Strickler & Alisa Deitz 🌱  
 Julie & Marc Sturm  
 Herbert Sturz  
 Gloria A. Styer 🌱  
 William & Larilee Suiter 🌱  
 Brenda Sullivan & Jeremy Kindall  
 Clare Sullivan  
 Sidney Sundheimer & Elizabeth Gelfand  
 Clifford & Lois Sunflower 🌱  
 Heather Surprenant  
 Juliet Sutherland & Jay Koven  
 John & Georgiann Sutor  
 Paula K. Svensson  
 Juliana Swank  
 Susan Sweitzer & Hal Hamilton 🌱  
 Synaptics, Inc.  
 Peter & Eleanor Szanton  
 Simon Szybist  
 Camilla Tannen-Barrup  
 Cody Tannen-Barrup  
 Jeffery Anne Tatum 🇺🇸  
 Andrea Taylor 🌱  
 David & Carla Tcholakian 🌱  
 Catherine Teare & Chris Lahey 🌱  
 John, Anne, Joanna & Hugo Tent 🌱  
 Kurt & Eden Terrell 🍷  
 Emma Thacker  
 Thomas Thacker & Kate Krahel 🌱  
 Frank Thatcher  
 Jerry Thompson & Harriet Huss 🌱  
 The Thorndike Family  
 Benjamin & Chris Thorne  
 Laney & Pasha Thornton  
 Flora L. Thornton Foundation



Laney Thornton Foundation  
 Margaret Tobin 🌱  
 Hector A. Torres Santiago  
 Anna Trask & Jack Hall  
 Sammie Travis 🌱  
 Triskeles Foundation  
 Alice Truax 🌱  
 Semeon Tsalbins & Sarah Connolly 🌱  
 Maureen Turey & Joseph Wiedermann 🌱  
 Barbara & John Turitzin  
 Jeremy Tuttle 🌱  
 Marjorie H. Ulin 🌱  
 Monica & William Vail  
 Paul Van Horn & Anne January  
 Vanguard Charitable Endowment Program  
 Micah Vaughan  
 Taynara Venceslau  
 Vermont Community Foundation 🌱  
 Stephen Victor & Susanne Roberts  
 Philippe & Kate Villers 🌱  
 Sarah Volkert  
 David Wachtel & Jennifer Goldstein  
 Johnny K. Wagner  
 Catherine Walker  
 Ann & Matthew Wall  
 Christopher & Marie Waring 🌱

Richard & Sarah Warren 🌱  
 Eve Waterfall & Claire Walton  
 Kristin Webb & Todd Woerner 🌱  
 Robert Webb & Sonja Johansson 🌱  
 Joshua Weeks  
 Donald Weiman 🌱  
 Barbara Weinstein & Theodor Liebmann  
 Emanuel & Anna Weinstein Foundation  
 Elizabeth Welch & Gary Peck  
 Barbara F. Wells 🌱  
 Julia Wells  
 Phyllis & Michael Wells 🌱  
 Theodore & Nina Wells  
 Jennifer Wertkin  
 Charles & Marietta Weston 🌱  
 Henry Wheaton  
 David White 🌱  
 Lawrence White  
 Katherine Widness 🌱  
 John Wilhelm & Elizabeth Gilbertson 🌱  
 Althea Wilkins 🌱  
 Claudia Williams & David Witzel  
 Diana & Richard Williams 🌱  
 Eliza Williams  
 Karen Williams 🌱  
 Joy Ann & Marcus Williams

Polly Williams  
 Thomas P. Williams 🌱  
 Frank Willis  
 Jonathan & Alita Wilson 🌱  
 Alan Wineburgh & Jill Wellenbach 🌱  
 Ely & Richard Winingar  
 Alan E. Wirzbicki  
 Jen Wofford  
 John G. Wofford 🌱  
 Jane Wohl 🌱  
 Hannah Wolfe  
 Abigail C. Wolfson 🌱  
 Montserrat Wong Paez  
 Charles B. Woodbury 🌱  
 Kenneth Woolfe 🌱

Lorin & Judy Woolfe  
 Frank & Louise Wright 🌱  
 Jeremy Wright  
 Jarod Wunneburger  
 Charles Wyatt  
 Elizabeth & Stephen Wyatt  
 Lori Wyman & Louis Battalen  
 Edward & Grace Yaglou 🌱  
 Mark Yerkes & Jennifer Connor  
 Annie Youngerman & Joshua Blumenstock  
 Elisabeth Youngerman & Jonathan Gottlieb  
 Steven Zeichner & Rachel Moon 🌱  
 Zestworks Speaking and Training 🌱  
 Jeff & Linda Zissu

## ABOUT THIS LIST

This list of generous contributors reflects gifts made from January 1, 2016 through December 31, 2016. Every effort has been made to ensure accuracy. We encourage you to contact Jen Flaster, Development Director, 802-422-3761 x 232 or [jen@farmandwilderness.org](mailto:jen@farmandwilderness.org) with any corrections.

## NAMED FUNDS & PLACES

### NAMED ANNUAL FUNDS

The following named funds have been established to support campership on an annual basis:

Anna Lytton Campership Fund  
 Alyssa Robbins Campership Fund

### NAMED ENDOWMENT FUNDS

The following named endowment funds have been established in perpetuity:

Jack and Cappy Bailey Campership Fund  
 Nash Basom Memorial Fund  
 Brevilieri Fund  
 Michael Browner Campership Fund  
 Edward "Teddy" Bright Ebersol Campership Fund  
 Winnie Feise Leadership Fund  
 Howard and Marie Hausman Campership Fund  
 Land Conservation Fund  
 Herman and Gerda Lissner Campership Fund  
 Charles and Hilda Mason Campership Fund  
 Ottaway-Hanzelka Foreign Campership Fund  
 David Sanjek Campership Fund  
 Teen Campership Fund  
 Trustee's Circle Fund  
 Sam Warren Campership Fund  
 Kenneth B. Webb Fund  
 Susan H. Webb Outdoor Education Fund

### NAMED PLACES AT FARM & WILDERNESS

The following have been named in tribute to and in memory of Farm & Wilderness community members:

### CAMPS & PONDS

Flying Cloud Camp  
 Peggy Dulany Pond

### STRUCTURES

2010 Trustees Barn Day Camp Play Structure  
 Joyce Donnell Greenhouse at Tamarack Farm  
 Al Hicks Cabin at Timberlake  
 Mabel Hicks Cabin at Indian Brook  
 Doug North Shelter at Peggy's Pond  
 Susan St. John Resource Center  
 Phil's Shelter near SAM Camp  
 Jocelyn Villers Lodge at Saltash Mountain  
 Kenneth Webb Lodge at Timberlake

### PLACES & SPACES

McKey "Mac" W. Berkman Cupola at Tamarack Farm Dairy Barn  
 Leonard Cadwallader Workshop at the Resource Center  
 Mark Gibson Picnic Table at Timberlake  
 Arlene Hennessey Office at Main Office  
 Sonja Johansson Fields  
 "The Joy of the Dance" Weathervane in loving memory of Sam Warren at Tamarack Farm  
 Doug North Library at Timberlake  
 Robert P. Owen Road  
 Jeffery Anne Tatum Garage at the Resource Center  
 Susan H. Webb Library at Indian Brook  
 Susan H. Webb Wildflower Bed & Bench at Indian Brook

### MEMORIAL TREES

All planted in the Memorial Grove in the Indian Brook orchard unless otherwise indicated:

Jack & Cappy Bailey  
 Stacy Cavanaugh  
 Jesse Drooker  
 Edward "Teddy" Bright Ebersol at Timberlake  
 Jeremy Hopkins  
 Eden Kinsey at Timberlake  
 Wendy Reagan  
 Josiah Rich





## MEMORIALS

In 2016 gifts were made in memory of:

Jackson Bailey - Robert Borgen

Nash Basom - Linda & John Berryhill, Mark Pecker & Betsey McGee, Rachel Pecker & Bill Yukstas

Suzanne Beicken - Peter U. Beicken

Dameian "Demo" Bossarte - George Bossarte

Adam "Heart of Oak" Burford - Abigail Burford

Teddy Ebersol - Benjamin Klebanoff

Jane Ehrlich Bayer - Amy Ehrlich & Henry Ingraham

Nancy & Reinhardt Elster - Charles Elster & Myrna Zambrano

Winnie Feise, an amazing mentor on International Women's Day! - Edward & Caroline Cope

Margaret Fisher - Thomas & Carol Ann Fisher

Jane Frisa - Irwin & Melissa Post

Jean Inman & Winnie Feise - Katherine Inman

Polly Keller & David Kuhn - Julie & Forrest Forsythe

Eden Kinsey - Todd Daloz & Susannah Walsh

V. Benjamin Lang - Jon Lang

Anna Mirabai Lytton - Kate Rabinowitz & Rameshwar Das

Jerome E. Maisel, MD - John & Barbara Maisel

Delia Martinez - Peter Meyer & Amelia Koch

Florian Meeks Jr. - The Florian and Eloise Meeks Trust

George Oberst - Jeffery Anne Tatum, Ellen H. Satterthwaite, Susan Sweitzer & Hal Hamilton

Alyssa Robbins - Carolyn Ristau & William D. Knight, Donald Robbins

Morton J. Ross - Rita Ross

Joseph Rutledge - Andrew & Heather Rutledge, Barbara Rutledge

Dave Sanjek - Barton & Cathy Fendelman

Gwladys Eliot Scott - Henry & Mary Hagerup, Investor Solutions, Inc.

Gunnar Sewell - James & Judy Sewell, Synaptics, Inc.

George A. Silvester - Gina M. Silvester

Sherilene Rena Singleton - Elizabeth & Dwight Madison

Bunnie Tent - John, Anne, Joanna & Hugo Tent, Joan Amatniek

Phil Tobin - Margaret Tobin

Thorny Penfield - Charlotte & Charles Gosselink

Ken & Susan Webb - Joan & John Gardiner, Charlotte & Charles Gosselink, Douglas & Suzanne Sears

Sukie Webb Hammond - Martin & Elaine Book, Lee Cook & Chris Cass, Robert & Virginia Stern, Starr & Bill Stixrud, Peter & Eleanor Szanton

Norm & Wini Williams - Karen Williams

Kay Young - Melinda Agee

Jared Zimmerman - Anonymous, Joan Alker & John Walsh, Michael Allen & Janice Kaplan, Maija Arbolino, Shelley Azumbrado, Allison Barlow & David Ochshorn, Laurel Barron & Robert Mendelsohn, Carol & Richard Barron & Family, Anne Bracker & Jefferson Singer, Rosalie Calabrese, Pam Calabrese, Carnegie Corporation of New York Matching Gifts Program, Rebecca & Jon Carson, Center for Popular Democracy - on behalf of Ana Maria, Andrew, Brian & the CPD staff, Ellen Chesler & Matt Mallow, William & Bonnie Clarke, Neal DeLaurentis, Laurel Dumont & Kyle Rosenkrans, Douglas & Priscilla Eakeley, Alan & Yukie Fiedler, Megan Golden, Ira Goldstein & Linda Samost, Ray, Andrea, Max & Zachary Graj, Daniel Grossman, Elizabeth Guernsey, Evan Guillemin, Harry & Cindy Handler, Craig Harwood, Jeffrey Heller, Mary Hennessey & Daniel Cunningham, Faith Hill, Daniel & Gina Hirschhorn, Clare Huntington & Nestor Davidson, International Human Rights Funders Group - from Azeen, Christen, Keith, Mona & Sarah, Jonathan Kaplan, Thomas Karr, Mark & Phyllis Kessler, Ruth Kunstader, Meredith Ladov & Family, Nikka Landau & Peter Beaugard, Thomas Leahey & Family, Mary & James Leahey, William Lee & Terry Tang, Paul Leonard, Amanda Feinstein, Zoe and Jackson, Craig Levine & Phoebe Farber, Michele Lord & the Staff at NEO Philanthropy, Roger Lowenstein, Lowenstein Sandler LLP, Geri Mannion, Stephen McConnell, Kelly and Joseph McDonald, Sam, Elly, Fleming & Henry Meeks, Marie Monrad, Open Society Institute Matching Gift Program, Mandy Osborne & Ellis Traver, Joe, Ronnie, Bob and Randy Piteo, Patricia Puritz, Stephen Rickard, Florence Roisman, Douglas Rubino, Catherine Ruckelshaus & John Sadik-Kahn, Eric Scherzer & Barbara Reisman, Abby Schultz & Ken Brown, Pamela Schwartz & Joel Feldman, Linda Siegel & Nick Brustin, State of New York Supreme Court - Kings County Administrative Staff, Terry Staudenmaier & Dan McCarthy, Charlotte & Alfred Steinmetz, Adam Stern, Robert & Virginia Stern, Herbert Sturz, Robert I. Usdan & Amy Yenkin Charitable Fund, David Wachtel & Jennifer Goldstein, Theodore & Nina Wells, William D. Zabel





## TRIBUTES

---

In 2016 gifts were made in honor, appreciation or recognition of:

Abby & Elise - Joyce Cooper

Tom Barrup - Deborah Roose & David Snyder

Pieter Bohen and his 10 years of service - Julie & Marc Sturm

Tulio Browning - Kerry Keane & Liane Thatcher

Harry Bruell - Laurel & Aaron Coburn

Former SAM Counselor Joe Deely & Chef Sam Arfer - Patricia M. Kelly

Forest Flame & FC counselors over the years - Andy & Emily Roz

Flying Cloud Staff - Emily Bruell & Christopher Ruigomez

James Frank, our son, an F&W counselor - James & Leslie Frank

Rachel Frizell - Kathryn Smith & John Frizell

Ian Haddad, Norwich University graduate - Allen & Janet Haddad

Prill Hinckley - Susan Hinckley-Porter & Philip Porter

Josh Hinckley Porter - Susan Hinckley-Porter & Philip Porter

Matthew & Evan Jose, former campers - Mimi & David Jose

Emily Kinsler - Sarah Koppelkam

Carol Leftwich - Eileen Hayden

Nick Marshall - William Graves

Dave Martin - Barton & Cathy Fendelman

Becky & Judy, Morgan & Everett @ F&W - Margaret Nankivell

Kelly & James Olive - Robert Houghteling & Elizabeth R. Fishel

Kerrianne O'Neill - Kelly O'Neill

Leah & Lydia Pillsbury - Charlie Pillsbury

John Porcino - Zestworks Speaking and Training

Yonatan Rechtman - Yigal Rechtman & Hara Person

The Reichert Family, Ruth Goldsmith & Joan Goldsmith  
- Richard, Toni, Ruth & Joan Goldsmith

Deborah Reik for Christmas - Eleanor Levinson

Ripps children and grandchildren - Sylvia Ripps

Brad Saines' birthday - Henry Wheaton

Henry Wheaton & Brad Saines - Philip & Catherine Saines

Jeanette Sarkisian Wagner - Natasha T. Hays

Toby Sundheimer's high school graduation - Stanley & Harriet Berman

Sunflower children - Clifford & Lois Sunflower

Andrea Taylor - Jonathan Furlong

Sam & Jacob Walker - Jeff & Linda Zissu

Lionel Wininger - Elly & Richard Wininger

Alexis, Jonas & Augusta Wood - Anonymous





FARM & WILDERNESS

401 Farm & Wilderness Road  
Plymouth, VT 05056  
[www.farmandwilderness.org](http://www.farmandwilderness.org)

## OUR MISSION

- To grow the seeds of courage & integrity in all participants
- To offer rugged, hands-on, outdoor adventure & challenge
- To encourage hard work & joyful play
- To create community that values long term stewardship of our environment

## OUR VALUES

In our Values, we reflect our long Quaker history and association. We strive to honor the “Light of the Spirit” in every person; our belief that each individual brings value to the community through unique gifts and strengths.

**Simplicity • Peacemaking • Integrity**  
**Community • Equity • Service**

Design: Anagramist.com

