



---

FARM & WILDERNESS

---

ANNUAL REPORT 2018



## A YEAR OF PARTNERSHIPS



The greatest news in 2018 was Farm & Wilderness' affiliation with the Ninevah Foundation. Five years in the making, this strategic partnership enables Farm & Wilderness to continue the work Ninevah began in stewarding, conserving and educating about the 3,300 acres of land and waters around Lake Ninevah. This also provides an opportunity for F&W to examine our own conservation practices and efforts to protect the health of the 1,800 acres around the Woodward Reservoir and Chelsea properties. By educating community members and neighbors, our summer staff and youth, we will share the timely lessons from which future generations will benefit.

We also honor the first year of another historical partnership, with a community that equally values conservation of the land and water, the Akwesasne Mohawk tribe. Under the leadership of executive director Tsiorasa (pronounced joe-leh-suh) Barreiro, we welcomed ten campers from the St. Regis community in upstate New York and Canada. Tsiorasa is the grandson of Bill "Flying Cloud" Cook, in whose memory the Flying Cloud camp was named. We look forward to growing this relationship.

We continue to reduce our carbon footprint. Our new solar array behind the resource building produces approximately 75,000 kilowatt hours of electricity

per year. We will continue to offset any increased electricity usage with renewable energy sources.

Other highlights of 2018 include:

We welcomed over 1,163 campers and staff, 25% identifying as people of color.

Red Spruce Grove, the girls' wilderness program based out of Indian Brook almost doubled in size.

Camp directors worked on the inclusivity and equity aspects of the camper experience, and began to examine what social justice means at camp and F&W.

We launched a Counselor Apprentice Program out of Tamarack Farm, and introduced a half season option for 2019, a practice that has historical roots in the 60s and 70s.

It is up to us to preserve the wild, beautiful spaces that fill our valley and hills with places to explore, take risks, grow up and create lasting, transformative memories. How we engage with our surroundings, our wildlife, and set the stage for future protectors of these most precious gifts is core to our mission, our values, and what we love about Farm & Wilderness. We hope you'll join us for an event on property, a visit, at drop off or the Fair to renew your connection to the beauty that is F&W and Ninevah.

In peace,

A handwritten signature in black ink that reads "Becca Steinitz".

*Becca Steinitz, Clerk, Board of Trustees*

A handwritten signature in black ink that reads "Rebecca Thomas Geary".

*Rebecca Geary, Executive Director*



## BOARD OF TRUSTEES

---

Rebecca Steinitz, Clerk • Arlington, MA  
Joan "Cindy" Amatniek • Philadelphia, PA  
Steve Burwell • Brooklyn, NY  
Mindy Fullilove\* • West Orange, NJ  
Janet Green\* • Cambridge, MA  
Margaret Henry\* • Rockville, MD  
Amy Hunter\* • Newton, MA  
Zora Jones Rizzi • Arlington, MA  
Adam Keller • Lyme, NH  
Nina Lesser-Goldsmith • Huntington, VT  
Colin Mitchell • New York, NY  
Tonya Oya Orme • Cambridge, MA  
David Scherr • Burlington, VT  
Andy Schultz\* • Austin, TX  
Blake Stewart\* • Jamaica, NY  
Martha Stitelman\* • Newfane, VT  
Andrea Taylor • Wilmington, DE  
Kristi Webb • Chapel Hill, NC  
Dano Weisbord\* • Amherst, MA  
Ann-Marie White\* • Minneapolis, MN  
Clarence Williams • New Rochelle, NY

\* Term began August 2018

° Term ended May 2018

## THE VISITORS' CIRCLE

---

The Visitors' Circle is an advisory board of community, non-profit, academic, and private sector leaders who are committed to supporting and advancing the mission of Farm & Wilderness. Members provide counsel to the Board of Trustees and staff, develop and strengthen relationships with alumni, parents, and friends, and foster philanthropic support for Farm & Wilderness.

Richard "Rox" Anderson • James Berkman  
McKey Berkman • Len Cadwallader  
Caroline Cope • Joan Countryman • Susan  
Saint James Ebersol • Dan Elias • Susanne  
Emory • Ian Gamble • Janet Green  
Rick Hausman • David Hoffer • Bruce Katz  
Roger Michel • Rich Parker • Burt Sonenstein  
Susan St. John • Adam Stern  
Jeffery Anne Tatum • Phil Villers

---

*On the cover: Weeding at the Timberlake garden*







## FINANCIAL REPORT

In 2018, our overall summer camp enrollment fell just shy of expectations, lowering our program income. Donations continue to be strong and we are pleased to announce that, despite the stock market volatility in the fourth quarter of 2018, our endowment funds ended the year at \$6.2 million. Our funds are primarily invested with Friends Fiduciary Corporation and, in 2018, we added a portfolio with First Republic Bank. Our endowments generated over \$250K in interest, most of which funded camperships. Thanks to this support, we are grateful to our community for entrusting us with their resources to carry out our mission. We were able to award almost \$500,000 in camperships.

Over the past 10 years, our reduction of greenhouse gas emissions has resulted in a 41% reduction in utility costs (fuel oil, electricity, and trash removal) and by these and other cost containment efforts, our operations finished the year near break-even.

For the past 5 years, we have kept tuition increases to a minimum. For example, full season tuition has only increased by 1.4% annually. This has kept F&W's tuition between 12 - 17% below the average cost of comparable New England non-profit residential summer camps.

To ensure our long-term sustainability, we continue to explore cost reduction and containment methods for operating expenses, while expanding our reach to serve more campers and their families. In 2019 we will embark on our strategic planning process, where we will look at internal and external factors, to enable us to advance our mission in the best possible way.

Financial transparency is key to decision making processes. On the following page, we offer highlights from our 2018 financial report. We hope the information is clear and useful for our staff, donors, and families.

We are grateful for the hard work of F&W's dedicated staff, and for the generosity of our community. Thanks to our wonderful community, we continue to offer campers and their families a unique summer experience, always unplugged, and always unforgettable!

Tonya Orme  
Treasurer

Shannon Keyes Ciucevich  
Chief Financial Officer



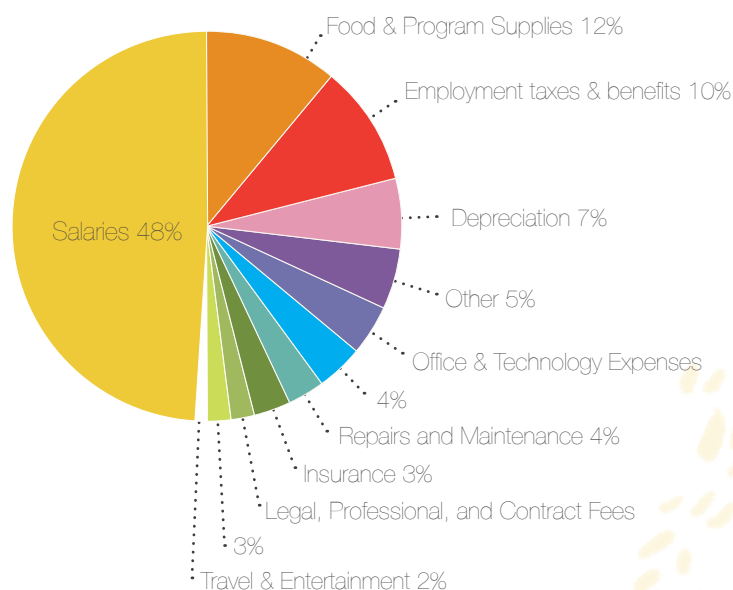
# STATEMENT OF ACTIVITIES: FIVE-YEAR SNAPSHOT

Year Ending	2017	2017	2016	2015	2014
<b>Operating Revenue</b>					
Tuition	\$3,684,717	\$3,684,717	\$3,725,844	\$3,545,002	\$3,397,714
Less discounts & camperships	(\$697,790)	(\$697,790)	(\$626,720)	\$(564,726)	\$(562,806)
Reservoir Rental Income (net)	\$319,771	\$319,771	\$314,830	\$309,432	\$241,605
Contributions	\$1,068,246	\$1,068,246	\$1,687,067	\$1,177,356	\$354,667
Investment Income	\$211,618	\$211,618	\$188,454	\$170,216	\$160,992
Other Revenue	\$252,024	\$252,024	\$263,792	\$284,314	\$230,622
<b>Total Revenue</b>	<b>\$4,838,586</b>	<b>\$4,838,586</b>	<b>\$5,553,267</b>	<b>\$4,921,594</b>	<b>\$3,822,794</b>
<b>Functional Expenses</b>					
Program Expenses	\$3,081,639	\$3,081,639	\$2,993,762	\$2,916,289	\$2,855,634
General & Administrative	\$931,228	\$931,228	\$997,025	\$1,114,940	\$921,158
Fundraising	\$235,075	\$235,075	\$379,363	\$337,190	\$271,531
<b>Total Expense</b>	<b>\$4,247,942</b>	<b>\$4,247,942</b>	<b>\$4,370,150</b>	<b>\$4,368,419</b>	<b>\$4,048,323</b>
Net Asset Change <i>(before other changes)</i>	\$590,644	\$590,644	\$1,183,117	\$553,175	\$(225,529)
Total Other Changes	\$705,258	\$705,258	\$132,630	\$140,304	\$472,420
<b>Total Change in Net Assets</b>	<b>\$1,295,902</b>	<b>\$1,295,902</b>	<b>\$1,315,747</b>	<b>\$693,479</b>	<b>\$246,891</b>

## STATEMENT OF FINANCIAL POSITION

Year Ending	2017	2017
<b>Assets</b>		
Cash	\$567,137	\$567,137
Accounts Receivable	\$60,791	\$60,791
Pledges Receivable	\$900,287	\$900,287
Other Assets	\$87,551	\$87,551
Investments	\$6,375,244	\$6,375,244
Land, Buildings, Equipment	\$5,107,044	\$5,107,044
<b>Total Assets</b>	<b>\$13,098,054</b>	<b>\$13,098,054</b>
<b>Liabilities</b>		
Accounts Payable	\$81,140	\$81,140
Accrued Expenses	\$76,524	\$76,524
Unearned Tuition	\$856,460	\$856,460
Unearned Lease Fees	\$286,060	\$286,060
Bank Notes		
<b>Total Liabilities</b>	<b>\$1,300,184</b>	<b>\$1,300,184</b>
<b>Net Assets</b>		
Unrestricted	\$6,112,757	\$6,112,757
Temporarily Restricted	\$3,173,401	\$3,173,401
Permanently Restricted	\$2,511,712	\$2,511,712
<b>Total Net Assets</b>	<b>\$11,797,870</b>	<b>\$11,797,870</b>
<b>Total Liabilities &amp; Net Assets</b>	<b>\$13,098,054</b>	<b>\$13,098,054</b>

## USE OF FUNDS IN 2017





"It was magical. Grueling, strenuous, lovely  
and insightful. **I loved it!**"

-Quester, age 15





## FARM & WILDERNESS FACTS

**1,213 miles** hiked by campers

**345 miles** canoed by campers

**10,354 pounds** of organic  
vegetables were grown



## CAMP FACTS

**609** overnight campers, 410 returning  
(68% retention)

**224** day campers, 136 returning (61% retention)

**25%** overall diversity rate



## CAMPERSHIP

**\$495,233** awarded in camperships

**198** campers received camperships

**20%** increase in campership awards over 2017



## COMMUNITY HIGHLIGHTS

**791** community members donated more than  
\$495,115 in 2018

**3 out of 4** summer staff are donors

**100%** of our leadership team and Board of  
Trustees donate to F&W







## 2018 SUSTAINABILITY REPORT

We have completed an annual greenhouse gas inventory since 2009. This process helps us understand our impact on the environment and practice better environmental stewardship, lessening our contribution to global climate change through responsible resource use. Analyzing resource use allows us to continue in our mission to live closely with the natural world in all areas of operations.

In many areas, Farm & Wilderness operates relatively “off-the-grid.” For example, composting all organic material, including human waste, and housing campers in cabins without electricity.

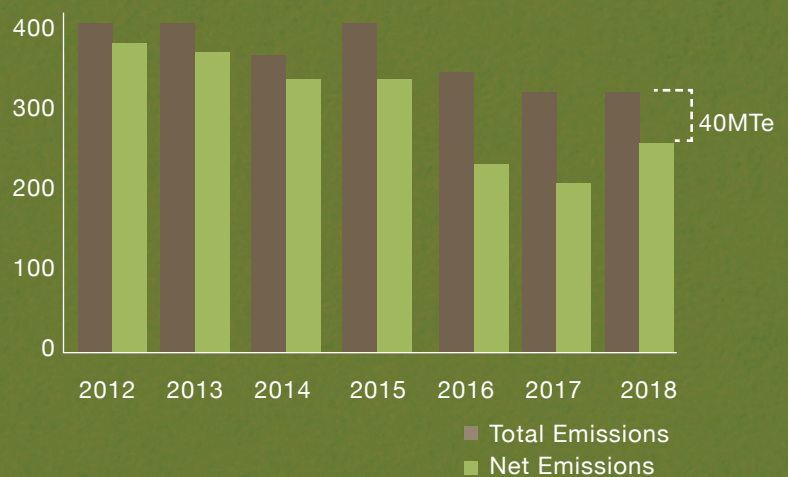
Additionally, we have been increasing efficiency within building operations. Continuing these operational initiatives, replacing inefficient appliances, using more efficient fuel to run these appliances, transitioning from fossil fuels to the use of F&W’s solar capacity where possible, and retrofitting buildings to conserve energy loss from these appliances, will all contribute to further emissions reductions.

### A CLOSER LOOK: THE IMPACTS OF COMPOSTING

This chart displays the importance of F&W’s composting program as a greenhouse gas emissions offset. The brown shows total emissions, the green shows net emissions after subtracting the amount of emissions avoided by composting.

Farm & Wilderness’ aerobic composting program (turning compost regularly and monitoring the temperature) reduces the amount of greenhouse gases that would otherwise be released if those materials decomposed without intervention.

TOTAL V. NET GREENHOUSE GAS EMISSIONS, 2010-2016

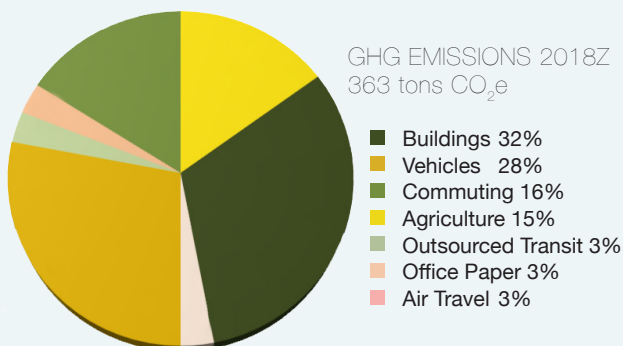


In 2018, 135 tons of animal, human, food and garden waste were composted, **saving F&W 40 metric tons of CO<sub>2</sub>** that would have otherwise been emitted.



## GREENHOUSE GAS INVENTORY RESULTS

In 2018, F&W operations were responsible for the emission of **296 metric tons** of equivalent carbon dioxide (MTeCO<sub>2</sub>).



F&W organizes its greenhouse gas emissions into seven operational categories:

**Buildings:** Emissions from electricity, hot water, heat, refrigeration and cooking fuel.

**Vehicles:** Emissions from cars, trucks and vans owned by F&W.

**Agriculture:** Emissions from farm animals.

**Commuting:** Work-related travel by year-round staff.

**Air Travel:** Work-related travel by year-round staff.

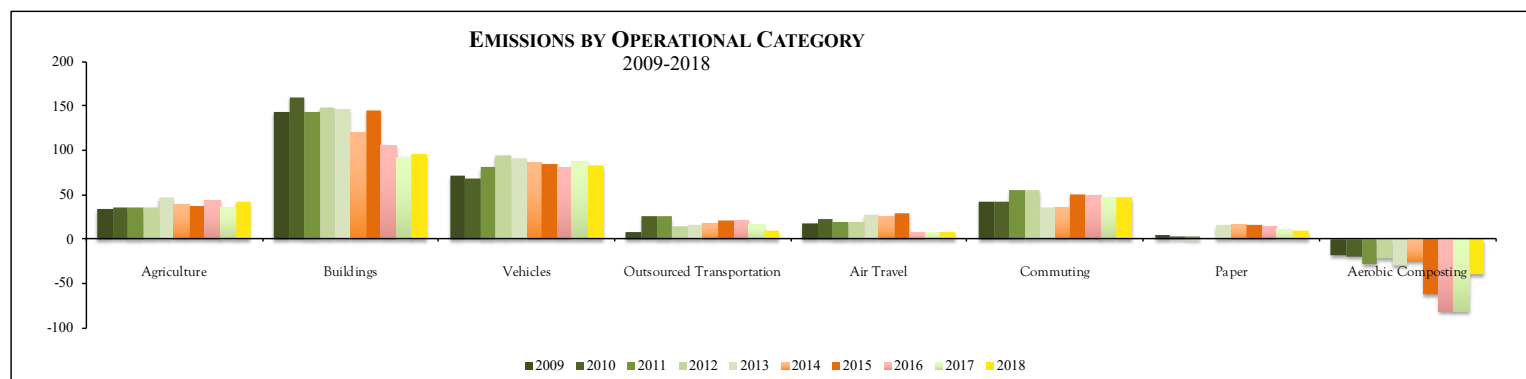
**Outsourced Transportation:** Work-related personal vehicle trips by year-round staff.

**Office Paper:** Total paper usage by F&W staff.

Our greenhouse gas emissions have **declined 35%** per camper and staff member since 2009.

## EMISSIONS BY OPERATIONAL CATEGORY 2009-2018

While there has been a decline in total emissions, looking at F&W's operational categories separately helps make clear which areas have had the most meaningful impact on greenhouse gas emission declines, as well as which operational categories could most benefit from institutional change and improvement. The chart below shows changes in emissions over time, separated out by operational category. Important changes are highlighted and discussed in greater detail below.





# LIFELONG LESSONS OF SIMPLICITY

## A Journey From Camp to Conservation

In the early '80s, four young Timberlake and Tamarack Farm alumni built several cabins on 40-acres near Lake Ninevah. Using the skills learned at camp and as crew, they pooled their resources and started construction.

**Andy Schulz** (TL: '67-'69, TF: '70, Staff TL: '73; '75-'76, Current Trustee) and **Gerry Rosenberg** (TL: '66-'67, TF: '68, Staff TL: '71, '73, '76 ; '01-'02, '04; F&W Trustee '08-'15) each built a cabin on the collectively owned land. **David Martin** (TL '62-'63, TF '66, Staff TL: '68-'77, '79, Director TL '83-'94) and **Nick Marshall** (TL: '63-'64; TF: '65-'66; Staff TL: '67-'68, '70-'76, '78-'79, Past F&W Trustee) combined forces to build another cabin nearby.

The nearby acreage had been preserved by F&W founders Ken and Susan Webb, who created the Wilderness Corporation in 1961. Eventually the corporation preserved thousands of acres in Plymouth and Mount Holly. To finance their initial 310-acre wooded purchase, the Webbs sold off small, private lots to a compatible and friendly group, who became known informally as the "wilderness community." These landowners knew the region wouldn't be overbuilt because the Wilderness Corporation had preserved the acreage.

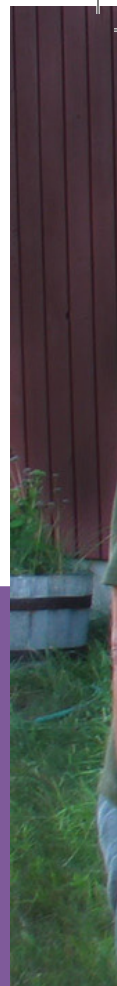
Today, Saltash Mountain, Flying Cloud, and Red Spruce Grove are located on lands owned by the Ninevah Foundation along with some of the hiking trails and Lake Ninevah shoreline.

"We saw the importance of working to protect land and keeping it in a natural state – both to hike and enjoy it and to know that you were surrounded by woods and beautiful land."

As young and energetic landowners, Andy recalled, they were invited to serve on the Wilderness Corporation's board of trustees. "It was an exciting opportunity to pursue the conservation of the lands of that area as well as making sure that our objectives meshed with F&W" Andy said.

Gerry, who lives in Chicago, said his Vermont cabin has given him a greater appreciation of conservation. This sentiment built on what he learned as a camper with the F&W value of simplicity. He also credits his time at the camps for the abiding, lifelong friendships he made and his appreciation of the outdoors.

"During my years at F&W I developed a deep appreciation of simplicity," he said. "I learned that one could live a rich and fulfilling life using a fraction of the energy most Americans consume."







---

*Andy, Gerry, Nick and Dave on Tiny Mountain in 2005.  
Also in the photo are Andy's wife, Mauri, Nick's wife, Kate,  
and Nick's daughter Nora.*

Over the next 30 years, the Wilderness Corporation grew and in 2000, after amassing a sizable 2,900 acres, became the non-profit Ninevah Foundation, dedicated to preserving lands in the Ninevah area. In 2018, the Ninevah Foundation joined forces with Farm & Wilderness to steward more than 4,800 acres of land and associated waters that they jointly own.

As landowners with strong ties to the area, Andy and David said they are proud of the conservation work done in the Lake Ninevah area. The Ninevah Foundation is working with the Town of Plymouth to establish more hiking trails (roughly two-thirds of the conserved land is in Plymouth and the remaining one-third is in Mount Holly). They continue their conservation work by promoting recreational use such as hiking and cross-country skiing and non-motorized use of the trails.

“Part of our conservation effort is to preserve the land for pedestrian and non-motorized use,” Andy said. “We gave the town easements to preserve the land and make it more accessible for public recreational use.”

David said the common bonds, and the respect for the land cultivated at camp, energized them to conserve the Lake Ninevah land. “We saw the importance of working to protect land and keeping it in a natural state – both to hike and enjoy it and to know that you were surrounded by woods and beautiful land.”





## THE LEGACY CIRCLE

---

The Farm & Wilderness Foundation established the Legacy Circle to honor, appreciate, and recognize members of the F&W community who have included F&W in their estate plans. We are very grateful to the current members of our Legacy Circle.

Anonymous (4)  
 Ruth Berg  
 Leonard & Mary Ann Cadwallader  
 Sylvia Edgerton  
 Susanne Davis Emory  
 Beth Falk & Dan Herman  
 Fred & Mary Anna Feitler  
 Tom & Carol Ann Fisher  
 Seth Gibson  
 Charles & Charlotte  
 Penfield Gosselink  
 Katie Harris  
*Priscilla B. Hinckley*  
 Catherine W. Hollis  
 Dr. Howard C. Hughes  
 Jack & Ruth Hunter  
 Arthur Kohn & Priscilla Laula

Christine & Christopher Ladd  
 Sarah Laughlin  
 Vicki & Daniel Lewis  
 L. Paul Lindenmaier  
 Janet W. Lowenthal  
 Colin Mitchell  
 Katie Morgan  
 Emily & Paul Morrow  
 Albert & Judie Muggia  
 Karen Beth Olch  
 Martin & Robin Oppenheimer  
 Rich & Chrissie Parker  
 Barbara Queen  
 Elspeth Reagan  
 Carolyn Ristau & William Knight  
 William & Carol Schwarzschild  
 Nancy L. Seidman

Sara Somers  
 Nancy Spanier  
 Susan St. John & Robert Rheault  
 Becca Steinitz & Sam Putnam  
*Jeffery Anne Tatum*  
 Kurt & Eden Terrell  
 Kristi Webb & Todd Woerner  
 Martha Webb  
 Donald Weiman  
 Thomas & Sandra Williams

\* Joined in 2018  
 Members who have passed  
 indicated in italics



# FARM & WILDERNESS FROM 7-TO-70 PLUS

CAMP IS WHERE BO QUEEN IS HER TRUEST SELF



Camp is where Bo Queen says she is her truest self, even though that sounds “mushy and overly sentimental.” Her experiences at Farm & Wilderness have spanned from when she was 7-to-70 “plus.”

Known at camp as “Queenie”, she spent her first summer at Indian Brook in 1949 at just 7-years-old. She returned for a number of summers and even remembers hiking with co-founders Ken and Susan Webb.

As an adult in 1979, she was chatting with a Quaker at a Mother’s Day party in Manhattan and asked if they were familiar with Farm & Wilderness camps. She “held her breath” until she learned that the camps still existed, and she eagerly attended Family Camp the following summer.

“I loved Family Camp that first year, and I went back for a second summer,” Bo said. “It was a ritual I wanted in my life.” Since then, she’s had frequent sojourns to Family Camp.

Bo is brimming with stories about camp. She remembers her best friend at Indian Brook back in the day, and now has developed a friendship with that woman’s daughter at Family Camp. She loves the absolutely “ridiculous fun” at meal times when people

pretend to milk cows when the Farm’s milk is served or when they do a dance when Farm vegetables are announced on the menu

“It is the one place where it is okay to be ridiculous and silly and that has a lot to do with John Porcino,” who steers Family Camp, she said. “Ordinarily I would feel uncomfortable, but he turns absolute absurdity into fun.”

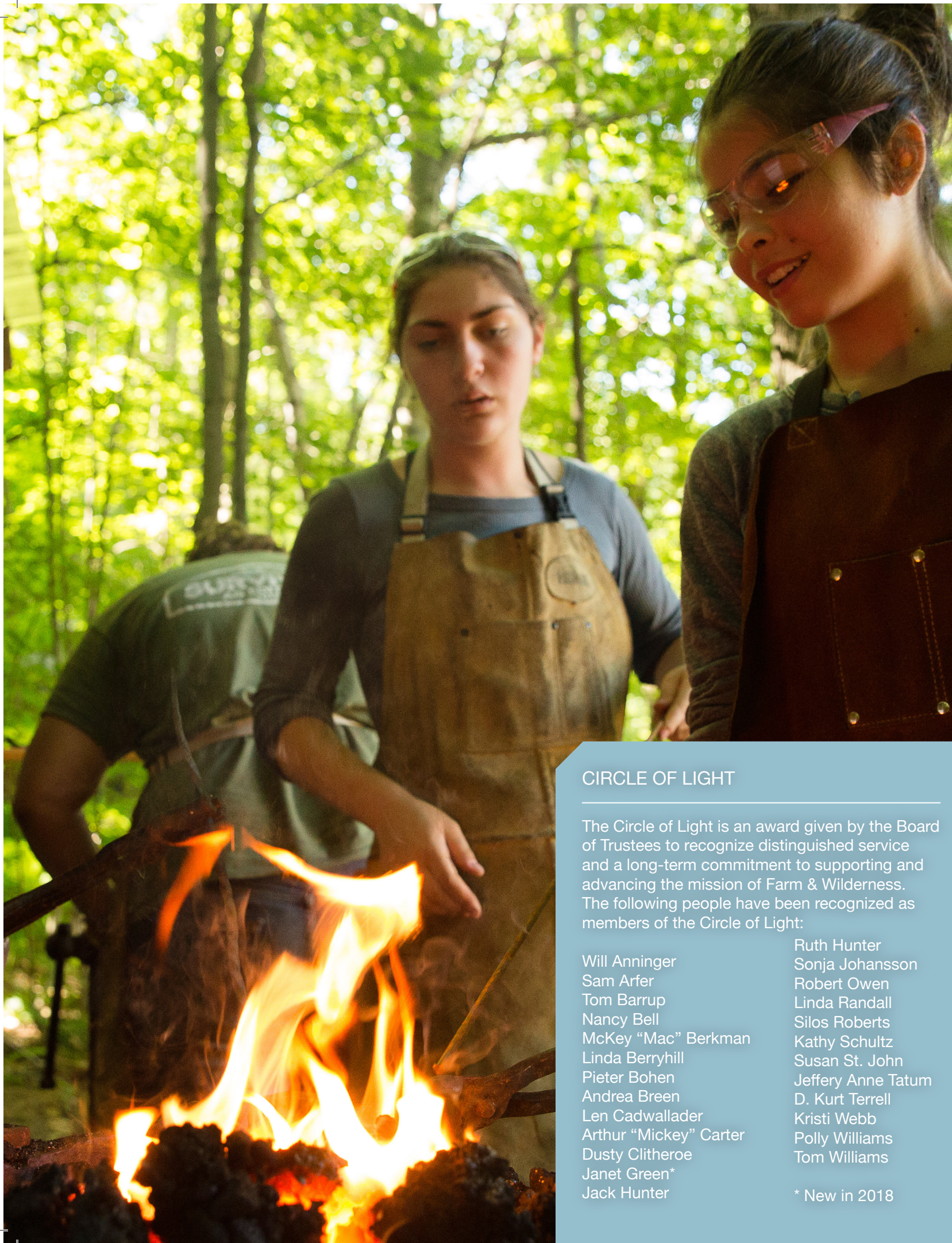
One time when many Family Campers were doing a strenuous 15-mile hike up Pico Mountain, she decided to do a shorter mile-long hike near to camp with a friend.

“When I came down from that hike and in the circle before dinner, there was a congratulatory warmth,” she said. “It was not fake or perfunctory. It was so genuine. They would see me with a cane and walker, but their sentiments were heartfelt from people who are serious athletes. They celebrated my success though it was small compared to what they did.”

Bo feels emotionally connected with the Farm & Wilderness community and decided to become a Legacy Circle member by including F&W in her will. Her return to Plymouth for Family Camp rekindled the sentiments she experienced when she spent summers at Indian Brook as a child.

“Family Camp is one of the places in life where I feel safest, where there is the least judgment and there is so much kindness and generosity,” she said. “Leaving F&W in my legacy is one of the ways I can stay connected and I can leave the earth knowing something remains of me at Family Camp.”





## CIRCLE OF LIGHT

The Circle of Light is an award given by the Board of Trustees to recognize distinguished service and a long-term commitment to supporting and advancing the mission of Farm & Wilderness. The following people have been recognized as members of the Circle of Light:

Will Anninger  
Sam Arfer  
Tom Barrup  
Nancy Bell  
McKey "Mac" Berkman  
Linda Berryhill  
Pieter Bohen  
Andrea Breen  
Len Cadwallader  
Arthur "Mickey" Carter  
Dusty Clitheroe  
Janet Green\*  
Jack Hunter

Ruth Hunter  
Sonja Johansson  
Robert Owen  
Linda Randall  
Silos Roberts  
Kathy Schultz  
Susan St. John  
Jeffery Anne Tatum  
D. Kurt Terrell  
Kristi Webb  
Polly Williams  
Tom Williams

\* New in 2018



# FINDING COMMUNITY

## FROM A SHY YOUNGSTER TO A SOLID LEADER

When Grace Hsiang thinks of Farm & Wilderness, the word “community” quickly comes to mind.

Grace was an F&W camper from age three, attending the Barn Day Camp from '03-'07 and again from '09-'12. Her family has many connections to the camps. Her mother, Jenna, worked as the assistant director at Tamarack Farm; her father, Brian, worked at F&W's organic farm, and her younger sister, Iris, has attended several F&W camps.

“SAM Camp is the most magical place. The energy there is like nothing else,” Grace said. “Every year I went there was different because of the changing dynamics of the counselors and campers. SAM Camp is really built on the people who go there.”

For three “glorious” summers from '13-'16, Grace was a SAM camper. One of her favorite memories was a “really, really intense hike” on a Sugar Loaf trip in Maine. “I remember one morning getting to the top of a really tough climb. I saw more of the world at one time than I've ever seen. It was a breathtaking experience being with people I love and having all these great experiences together.”

Grace was inspired to give back to the F&W community, following in the footsteps of her mother, Jenna, and her father, Brian.

In 2017 Grace accepted Barn Day Camp Director Polly Williams' invitation to be a junior counselor. Grace returned as a full counselor in 2018.

Polly described Grace as “a quiet presence at camp,

solid and peaceful. She brings a mature steadiness that you don't often see in young counselors.”

“I think SAM Camp brought me out of my shell. I felt really comfortable there,” she said. “Today I'm not shy and I have a lot of relationships with a lot of different people. I owe that to SAM Camp because it was a smaller camp from which could branch out.”

One highlight of her summer at the day camp was working with a young camper who declared on his first day that he wasn't going into the water. She started playing ring-toss games in the shallows and, by the end of the session, he would venture into waist-high water.

Grace said she was a shy youngster and yet found her voice at camp. She applied those skills to building her community at home by tutoring, joining the Nordic skiing and volleyball teams, and volunteering at a local elementary school.

“It is such a great network of people who share amazing beliefs and value systems,” she said. “It has really shaped me into who I am today.”

The friends, values and support she's gained are why this Essex High School 11th grader donates to F&W.

“They gave us an opportunity as BDC staff to show appreciation for the community, so I decided to donate because it has given so much me,” she said. “I think F&W has given me a wider outlook on life.”



*Grace Hsiang working at the Barn Day Camp in 2018*



"Through working at Farm & Wilderness, I've made some of my best friends, grown into a better version of myself, and figured out what I want to do with my life. I plan on working here again whenever I can."

- IB Staff

#### OUR STAFF

Thank you to our amazing group of 2018 staffers. Please see the complete 2018 staff list on our website, [www.farmandwilderness.org/annual-report](http://www.farmandwilderness.org/annual-report)





# 2018 DONORS

F&W relies on the support of our alumni, camper families, staff and friends each year and we are grateful to those listed below for their gifts in 2018. We are also pleased to recognize those who have made 10 or more gifts to F&W.



## 10 to 49 lifetime gifts

Anonymous (31)  
Gail & Jeffrey Aaron  
Jamie Abelson  
Stuart & Benjamin Abelson Foundation  
Trust  
Jacob Abrams  
Abraham Adams  
Kathleen Adams-House & Jeffrey House  
Lorna Adley  
Aesculus Fund of the Tompkins  
Charitable Gift Fund  
Indigo Agee  
Melinda Agee  
James & Jennifer Akula  
John & Leslie Akula  
Areve Alexander Charitable Fund  
Jessica Alper  
Quinn Alper  
Zachary Alper  
Rouwenna & Craig Altemose  
Joan Amatniek  
AmazonSmile Foundation  
Jan & Joe Ambrose  
Malaika Amon & Anthony Bregman  
Richard Anderson  
Stephen Anderson & Ava Gips  
William Anninger & Carol O'Donoghue  
Meg Ansara & Joel Gagne  
Michael Ansara & Barbara Arnold  
The Anton Family  
Arielle Antosca  
Alan & Judith Appelbaum  
Apple Lane Foundation  
Samuel Arfer  
Glenda Argueta  
Margaret Army & Janice Doppler  
Michal Aronson & Jules Keitt  
Addison & Janet Ault  
Bruce Austern & Tim Tierney  
Barbara Autio  
Paul Bader  
Linda Bailey & Edwin de Bruijn  
Bruce & Lucy Baizel  
Alexandra Baker  
Finley Baker  
Susan Baker & Rick Gilkey  
Victor Baker  
Annalivia Balaban  
Nancy Balaban  
Nicholas & Maura Balaban  
Richard Balaban & Kim Shellenberger  
Emma Balazs  
Elisa Moore Baldwin & Wes Baldwin  
Rebecca Balint & Elizabeth Wohl  
Tracy Balzano & Daniel Genova



## 50 to 99 lifetime gifts

F. Carter Bancroft & Brooke Larson  
Bank of America Charitable Gift Fund  
Robert & Jane Barber  
Valerie Barr & Susan Yohn  
John Bassett  
Lucy Bassett & Alex Taurel  
Marilyn & Walter Baurle  
Kelly Beerman  
C. Diane Bell  
Kathleen & Jeffery Bell  
Jean Bellow  
Amy & Jeff Benedict  
Benevity Community Impact Fund  
Olivia Benissan  
Hannah Bennett  
Andrea Berchowitz  
Karina Berg & Joseph Ross  
Sarah J. Berger  
Cecilia Bergman  
Daniel Berkman  
McKey & James Berkman  
Philip & Natasha Berkman  
R. T. Winston Berkman-Breen  
Zachary Biegum  
Heidi Birch  
Elizabeth Bird & Betti-Sue Hertz  
Timothy Bird, Becky MacDonald & Siena  
Charmarie J. Blaisdell  
Emily Blank & Alec Appelbaum  
BNY Mellon Trust of Deleware  
John & Jennifer Boger  
Pieter Bohen  
Robert Borgen  
Jeffrey Bounds  
Doris Bouwensch  
Daron Boyce  
Karen & Gary Bradley  
Mary E. Bradshaw  
Kate Braemer  
E. Michael Brandt & Mary Bowne  
Jens & Spee Braun  
James & Alice Breed  
Andrea Breen & William Perkiss  
Camilla & David Brinkman  
Brooklyn Community Foundation  
C. Baird & Carol Brown  
Martin Brown  
Peter & Jill Brown  
Richard Brown & Anita Loose-Brown  
Wayles Browne & Theresa Alt  
Tulio Browning & Juliet Skeet  
Leo Bruell  
Joanna & Derek Buckner  
Colleen Bumford  
Christopher Bunn



## Campfire Circle recurring donor

Miyaca Dawn Coyote  
Miles Crabtree  
Jay Craven & Elizabeth O'Brien  
Kelsey Crowe  
Roy, Serena & Ben Crystal  
Gail Cunningham  
Michael Cunningham & Claudia  
Becker  
David Cutler-Kreutz  
Carol Dalgarno  
David Dalgarno & Brenda Hochberg  
Todd Daloz & Susannah Walsh  
Aaron Daniels & Lisa Dezzutti  
Amy Darley & Avram Patt  
Alexander Davenport  
Cynthia Davidson  
Donald Davidson  
Avril de la Cretaz  
Charles de Sieyes & Carol Ward, Nicholas  
& Evan de Sieyes  
Karin de Vries  
Ellen DeLuca & Jerry Carney  
John Dent  
Rosanna Dent  
Deutsche Bank Americas Foundation US  
Matching Gifts Program  
David Devine  
Ned Dewees & Julia Blaut  
Robert & Cheryl Dewees  
Amy Dickson  
William & Ellen Dickson  
Jessica Dido  
Benjamin Dillon  
Janet Dillon  
Alan Dimen & Beverly Bense  
Edward & Katherine Dimen  
Thea Dodds  
Meghan Doherty & Samantha  
Green  
Gideon & Nitza Dominitz  
Larry Dougherty, Taylor Ward &  
Family  
Asher Doyle  
Tamoni Drew  
Harold & Nina Drooker  
Mary Duffy  
Philip & Ariene Dunkelbarger  
Jane & Willard Eastman  
Karlann Eberhardt  
Jeb Eddy  
Nina Edgerton  
Walter H. Effron  
Daniel J. and Edith A. Ehrlich Family  
Foundation  
Helen & William Eigabroadt  
Jennifer Ekert & Peter Bittinger



Charles Elster & Myrna Zambrano 🌱  
 Susanne & Clay Emory 🌱  
 Brett Engstrom & Betsy Brigham 🌱  
 Dawson Engstrom  
 R. Todd & Kim Kelling Engstrom 🌱  
 Langston Epps  
 The Epstein Family of Albuquerque  
 Jeremy Epstein  
 The Ergoods  
 Peggy Robison Espinola 🌱  
 Rachel Estey  
 Facebook Payments, Inc.  
 Lisa Farmer  
 Adam Fawer & Meredith Davis  
 Ellen Feder & Jennifer Di Toro  
 Sheelah Feinberg  
 Fred & Mary Anna Feitler 🌱  
 Barton Fendelman 🌱  
 Jonathon & Carolyn Fendelman 🌱  
 Claudia P. Fennell 🌱  
 Catherine Feuer  
 Fidelity Charitable Gift Fund  
 Leslie G. Fields  
 Anna J. Fincke 🌱  
 Benjamin Finley 🌱  
 Christopher & Elizabeth Finley  
 Steven P. Fischer  
 Julian Fischer Frank  
 Thomas & Carol Ann Fisher 🌱  
 Jen Flaster 🌱  
 Isaac Fliegelman, Josephine Presutto, &  
 Ron Fliegelman  
 Colin Flynn  
 Saxon Advisors, LLC 🌱  
 Roger & Tonya Flynn  
 Margaret & Sam Fogel Charitable Gift  
 Fund  
 Anne S. Fogg 🌱  
 Ford Foundation 🌱  
 Joel Forman & Dora Galacatos  
 Michael & Amy Forster Rothbart  
 Lee Forsythe & Molika Suy Forsythe  
 Scott Forsythe  
 Sarah Forth & Joseph Maizlish 🌱  
 Lucius & Rhonda Fowler  
 VW & Catherine Fowlkes  
 Deborah Frangquist  
 James & Leslie Frank  
 Sharon & Evan Fray-Witzer  
 Katharine & Jay Freeman 🌱  
 Liam Frey  
 Geoffrey Fried & Joanna Bodenweber 🌱  
 Amy Frisch  
 Bruce Frost  
 Mindy Fullilove, M.D. 🌱  
 Jonathan Furlong  
 Ellen Furstenberg 🌱  
 Anita Gabalski  
 Nicole Gadon  
 Lyell Galbraith  
 Katherine Gamma  
 Gamry Instruments  
 Julie Gantz  
 Karen & Edward Gartner 🌱  
 NJ Gates & Kate Batten 🌱  
 Thomas Gaughan  
 Sherry Gauldin & Val Giesey 🌱  
 Rebecca Geary 🌱  
 Adam Gelfand

Leopold R. Gellert Family Trust  
 Ann-Mari Gemmill & Mitchell Ratner 🌱  
 Christine Gibbs 🌱  
 Roland & Elizabeth Gibson 🌱  
 Seth Gibson 🌱  
 Beth Girshman  
 Curtis Givan & Alice Longobardi Givan 🌱  
 Rebecca Givan  
 Craig & Jennifer Given  
 Emily Glazebrook  
 Elizabeth & Thomas Glick 🌱  
 Morris Gold  
 Michelle Golden & Helen Onthank 🌱  
 Peter Goldsmith  
 Richard, Toni, Ruth & Joan Goldsmith 🌱  
 Ruth E. Goldsmith 🌱  
 Jenny Goldstein & Dave Wachtel  
 Naomi Goldstein 🌱  
 Sarah & David Goldstein  
 Talia Goldwasser  
 Pedro & Nancy Gomez  
 Jonathan Gonzalez  
 Ellen S. Gordon 🌱  
 Sarah Gordon  
 Sathya, Andrea, Oona, & Marcus  
 Gosselin  
 Charles & Charlotte Gosselink 🌱  
 William Granger & Gina Alexander  
 Granger  
 Jeffrey Gratz & Susan Buchsbaum 🌱  
 Margaret Graustein & Sebastian Rossi 🌱  
 Sarah & Liam Gray 🌱  
 The Greater Cincinnati Foundation 🌱  
 Janet & Allan Green 🌱  
 Richard & Clara Green 🌱  
 Jenny Greenberg, Jeffrey Brenner & Finn  
 Brenner  
 Jim & Nada Greenfield Family Charitable  
 Fund  
 Elinor Gregor 🌱  
 Rona H. Gregory 🌱  
 Dan Grossman & Sarah Bansen  
 Soren Grunder  
 Janice Guild  
 Meghan & Jay Gump 🌱  
 Lila Guterman & Christopher Kankel  
 Melinda Hackett 🌱  
 Julie Haddad  
 Nicholas Haddad & Susan Flint 🌱  
 Owen Hale  
 The Charles & Kaaren Hale Family  
 Foundation  
 Deborah Hall 🌱  
 John Halle & Marka Gustavsson  
 Drew Halpin  
 Anne Hamilton & John Maloney  
 Nathan Hamilton  
 Susan Hammond & Jonathan Baker 🌱  
 Amy Handy 🌱  
 Marilyn Hanichak  
 Ann Harrer 🌱  
 Heather Harrick & Kungan  
 Delotsang  
 Scott Harrington 🌱  
 Catherine Harris & Andres  
 Rodriguez  
 The Harrison Bregman Family  
 Adele Hart  
 Harvard Class of 1955 Class Assistance

Fund  
 Maura Harway & Richard Mark 🌱  
 Nate Hausman 🌱  
 Rick & Emmy Hausman 🌱  
 Bruce & Ruth Hawkins 🌱  
 Eileen Hayden 🌱  
 Natasha Hays 🌱  
 Lucas Heald  
 Sara Heiberger & Jeffrey Sawyer 🌱  
 Hemenway Trust Company LLC  
 Amy Henderson, John Fuson, Harold  
 Fuson and Ella Fuson 🌱  
 Edith & George Henderson 🌱  
 Thomas C. Henning, Jr 🌱  
 Anne Hereford 🌱  
 Elizabeth Hernandez  
 Jody Nankivell Herriott  
 Abigail Herscovici  
 Mariel Hess 🌱  
 Renelda Higgins Walker 🌱  
 The Allen Hilles Fund  
 Prill Hinckley 🌱  
 Susan Hinckley-Porter 🌱  
 Anne Hintermeister & Bruce Wells 🌱  
 Stephen A. Hirsch, MD  
 The David and Barbara B. Hirschhorn  
 Foundation 🌱  
 Nancy Hoch & Eugene Glickman  
 Alex & Abbe Hoeherman  
 The Hodges Family 🌱  
 Daniel & Merideth Hoffer  
 David & Deb Hoffer  
 Pamela Hogan & Jeffrey Kimball 🌱  
 Valerie Hollis 🌱  
 Lauren Holt  
 George & Laura Honig  
 Roger & Ann Hooke 🌱  
 Hopkins Dunlop Family Fund 🌱  
 Mark Horowitz & Jennifer Senior  
 Houghteling-Fishel Family Charitable  
 Fund  
 Augie Howe 🌱  
 Geery Howe & Jane Cadwallader-Howe 🌱  
 Sam Howe 🌱  
 Dr. and Mrs. Warren B. Howe 🌱  
 Grace Hsiang  
 Ayanna & Andre Hsu  
 Isabel & Lynda Hulkower  
 Terri Hunt  
 Edgar & Judith Hurley  
 Jacob Iarussi  
 Brian & Susanne Ingliis  
 Kate Inman 🌱  
 Edward Ioffreda & Mari Jo Winkler-  
 Ioffreda 🌱  
 Emily Jackson  
 Elinor & Chris Jaikaran  
 Paul Jaquiere & Meryl Golden 🌱  
 Martha Jensen 🌱  
 Vincent Jenulevich  
 Jewish Federation of Cleveland  
 Jewish Foundation of Greater New  
 Haven  
 Sonja Johansson 🌱  
 Colin Johnson 🌱  
 Cail Johnstone & Mike Hayford  
 Jessica Jonas & Tom Bolton  
 Chris Jones  
 Mimi & David Jose 🌱

Tim Jursak 🌱  
 JustGive 🌱  
 Adam Kahn & Kimberly Smith  
 Gina Kaiser 🌱  
 Eli Kantrowitz  
 Jenn Kapuscik & Barb Siegel 🌱  
 Elena Kardonskaya  
 Joel & Laura Katz  
 Mira Kautzky, Keith Flaherty, Hazel &  
 Ruby Flaherty  
 Dale & Von Kearins  
 Karin Keane & Luca Losecaat-Vermeer 🌱  
 David & Friederike Keating  
 Jonathan Keeton  
 Adam & Marcia Keller  
 Lynn Keller 🌱  
 Travis & Zoe Keller  
 William & Lauri Kelley  
 Patricia Kelly 🌱  
 CJ Kenyon  
 Peter, Laura, Wilder & Maddie Kerson 🌱  
 Nava Kidon  
 Henry Killough  
 Matthew Killough & Kimberly  
 Becker  
 Jeff King  
 Phebe & Adam Kyrk 🌱  
 Sarah & Steve Kish  
 Ben Klebanoff 🌱  
 Victor Klebanoff & Danielle Greenberg 🌱  
 Tessa Kleeman  
 Joseph Klein & Elizabeth Ziegler  
 Spice Kleinmann 🌱  
 Richard Kleinschmidt 🌱  
 Sarah Kleinschmidt  
 Jan & Cindy Klotz 🌱  
 Richard Knapp & Susan Korytkowski 🌱  
 William & Mary Koch  
 Arthur Kohn & Priscilla Laula 🌱  
 Jason Kohn  
 Robert Kohn & Susan Hendrickson  
 Malcolm Kostuchenko & Susan  
 Burlazzi  
 Claire Kotarski  
 Kate Kruckemeyer 🌱  
 Kenneth Kruckemeyer 🌱  
 David & Wendy Kuhn 🌱  
 Jay Kullman 🌱  
 Robin G. Kutner 🌱  
 Jonathan Kwak 🌱  
 Christopher & Christine Ladd  
 Geraldine Lang 🌱  
 Jon Lang 🌱  
 Michael & Amanda Lapham 🌱  
 Olivia LaRocco  
 The Larsen Fund  
 Sarah Laughlin 🌱  
 Mara Lavitt  
 Gladys and Ralph Lazarus  
 Foundation  
 James Lazarus 🌱  
 Kerry Leavenworth  
 Katie Legnard  
 Elizabeth Leitman & Paul  
 Knoepfelmacher  
 David Lemmel 🌱  
 Will & Keeley Lent  
 Janet Leslie & James Anderson 🌱  
 Richard Lesnick & Amey Garber 🌱





Katy Lesser 🍀  
 Nina Lesser-Goldsmith 🍀  
 Ursula Levelt  
 The Levenberg Potter Family  
 Mira Levinson  
 Daniel Levitt & Fiorella Yaksetig  
 Philip & Linda Lidov 🍀  
 Naomi Lindenfeld  
 Leslie Lipkind  
 George Little 🍀  
 Katie Little 🍀  
 Caroline Livaditis  
 Cynthia Livingston 🍀  
 Rebecca Locke & Eric Sillman 🍀  
 Jutta, Karl, & Adrian Lorensen 🍀  
 John & Susan Louchheim  
 Pete Loucks 🍀  
 Susan Loucks 🍀  
 Trish Loving  
 Jeffrey & Andreina Luckett  
 Oneido Luis  
 Jonathan Lurie 🍀  
 Charles Lyman  
 The Madley Family  
 Francis Magai  
 Em Maguire  
 Maine Community Foundation - Ash  
 Point Fund  
 Thomas & Mary Majewski  
 Jean Mallary 🍀  
 Pamela L. Malloy

Vince Marinelli  
 John Marius & Christina L. Erickson  
 Hannah Mark  
 Penelope Markle  
 Landis & Gail Markley  
 Phillip Marriott & Susannah Taylor  
 Katherine Marsengill & Brent Adams  
 David Martin 🍀  
 Maury Martin & Susan Miller 🍀  
 Karen Martin-Carter  
 Math for America  
 Allen Maurer 🍀  
 John & Nathalie May  
 Kellianna Maya  
 Alex Mayer  
 Jack & Chip Mayer 🍀  
 Rita McCaffrey 🍀  
 Timothy & Phoebe McCosker 🍀  
 McGraw-Hill Education Helping Hands  
 Program  
 Rosemary McInnes  
 Sara McKay & Kate Steinle  
 Geoffrey McQuilkin  
 Sarah Greer Mecklem 🍀  
 Andrew & Lucy Meigs 🍀  
 Martha Meigs  
 Cynthia Mesh & Martin Ferguson 🍀  
 Leah Mesh-Ferguson  
 Peter Meyer & Amelia Koch 🍀  
 Sean Meyer  
 Ann & Charles Mick 🍀

Robert & Jean Miller Charitable Gift  
 Fund 🍀  
 Zach and Andrea Miller 🍀  
 Andrew Mills 🍀  
 Chris Moncrief 🍀  
 Peter Monius & Melissa Robbins  
 Maxine Monroe  
 Jenny Moore  
 Katie, Tom, & Lucky Morgan 🍀  
 Morgan Stanley Global Impact Funding  
 Trust, Inc.  
 Sean & Jennifer Morrison  
 Alice & Richard Morse  
 Jonathan & Charlene Morse 🍀  
 John Morton & Tamar Shapiro  
 Daniel Moscow & Sharon Strauss  
 Allan Moses  
 Karen & Gary Mueller 🍀  
 Albert & Judie Muggia 🍀  
 The Mugridge Family  
 Fredi & George Munger 🍀  
 Loretta & Charles Murphy  
 Stephen Murphy 🍀  
 Nina Musinsky & Jean-Claude Grattery 🍀  
 Doug, Fran & Charlotte Nadel  
 Becky Nankivell  
 Martha Nelson  
 Network for Good 🍀  
 Judy & Paul Nevin  
 Liam Newman  
 Sonia & Angel Nieto 🍀

Ellen Nissenbaum & Jeffrey Colman 🍀  
 Julia Noonan  
 Sarah Norton 🍀  
 Robert & Harriet Noyes 🍀  
 Charles O'Brien  
 Mark Obrinsky 🍀  
 Susan Ochshorn 🍀  
 The Ocone Family 🍀  
 Michael O'Connor  
 Ward Oliver & Catharine Grad  
 Gabriel Onthank  
 David & Lucy Ordoobadi 🍀  
 Scott Organ  
 Tonya Orme & Orhun Muratoglu 🍀  
 Richard & Margaret Osborn 🍀  
 Elisa Otter  
 Robert & Barbara Owen 🍀  
 Witten/Pachman Family 🍀  
 Nicco Palazzi  
 Donald & Virginia Palmer 🍀  
 Eugene Palmer  
 Jessica Palmer  
 Jeannine Palms & Dale Petty 🍀  
 Panoram Foundation  
 Hap Parker  
 Ralph Parker  
 Rich and Chrissie Parker 🍀  
 Mark Pasternack & Judy Meyers 🍀  
 Vanessa, Isaac, & Rowan Paulman  
 Robert Peck 🍀  
 Mark Pecker & Betsey McGee 🍀



Rachel Pecker & Bill Yukstas  
 Irelis & Johnny Perez  
 Gregory Perham  
 Dorothy Perkins 🌱  
 Annette Perot & Kate Thieda  
 Beverly Peterson 🌱  
 Mark Petrini & Deborah Jones  
 Glenda Phillips 🌱  
 Elizabeth Pierson  
 Pieter Pil & Karen Casper  
 Liza Pill  
 Leah Pillsbury 🌱  
 Marilyn Pirkle 🌱  
 Jonas Pitsker  
 Deborah Pizzi 🌱  
 David Platt & Anne Nissen 🌱  
 Elora Plocek  
 Logan Plourde  
 Mr. and Mrs. Louis Polese  
 Laurie & Michael Pollock Charitable  
 Fund 🌱  
 Maribeth & David Pomerantz  
 Abby Popper 🌱  
 Melissa Post 🌱  
 Camilla Potter & Frank Fang  
 Jerry & Linda Powell  
 Duncan & Henry Price  
 Ilene Price 🌱  
 Rachel Pritzker  
 Patrick Proctor 🏠  
 Christian Pruitt  
 Katarina Pugsley  
 The Pullen Family  
 R & R Foundation 🌱  
 R.C. Brayshaw & Company, Inc. 🌱  
 Katherine Rabinowitz & Rameshwar  
 Das 🌱  
 Cynthia Ramirez  
 Olivia Ramirez  
 Ian Ramsey-North  
 Dr. Linda S. Randall 🌱  
 Elspeth M. Reagan 🌱  
 Karen Reagan  
 Yigal Rechtman & Hara Person 🌱  
 Lisa Reed & John Seabrook  
 Ann Reichsman, Bruce, Amelia, &  
 Louisa Catalano 🌱  
 Candace Reid  
 Kristopher Rengert & Padmasini  
 Raman  
 Sue Rennels 🌱  
 Diane Renwick  
 Griff & Pam Resor 🌱  
 Phil & Catie Resor 🌱  
 Tucker Resor  
 Jonathan & Julia Rhoads 🏠  
 The Jonathan E. Rhoads Trust 🌱  
 Joyce Rich 🌱  
 Helen & Andrew Richards-Peelle 🌱  
 Jack & Cassandra Richter 🏠  
 Victoria Rico 🏠  
 Hannah Rigdon  
 Kathy Riley 🏠  
 Jenna Ring  
 Sylvia Ripps 🌱  
 Carolyn A Ristau, William D Knight, Chris  
 & Dan Robbins 🌱  
 Zora Rizzi  
 Donald Robbins 🏠  
 Marilyn Roberts 🌱

Megan, Chris & Jackson Roberts  
 Silos & Camilla Roberts  
 The Rockcastle Family  
 Daniel & Irene Rodgers 🌱  
 Luisa Rojas Rodriguez  
 Gregory & Kate Rolland 🌱  
 Kyle Rolnick 🌱  
 David Rood-Ojalvo 🏠  
 Deborah Roose & David Snyder 🌱  
 Gretchen Roose 🌱  
 Daniel Rose 🌱  
 Gerald Rosenberg & Bonnie Koenig 🏠  
 Benjamin Rosenthal & Nancy Martin  
 Kenneth Rosenthal & Catherine Forman  
 🌱  
 The Rothbart Family  
 Peter Rothbart  
 The Rothenberg-Azencott Family  
 Carolyn Rouse  
 Tim & Amy Rowe  
 RSF Social Finance - Sparks Fund 🌱  
 Roberta Rubin, Don Abrams & Melanie &  
 Jacob Abrams 🌱  
 Isabelle Rule-Becker  
 Philip & Christine Rundus 🌱  
 Andrew & Heather Rutledge  
 Arthur & Mary Sachs 🌱  
 Philip & Catherine Saines 🏠  
 Kilmer Salinas  
 Joshua Sampayo  
 Colin C. Samuel  
 Susan Sanders & Jeff Kisseloff  
 Julie Sanderson 🏠  
 Ellen H. Satterthwaite 🌱  
 Ridge Satterthwaite & Sally Gage 🌱  
 Nichole Savenor 🌱  
 Abby Schaefer & Larry Orfaly 🌱  
 Lisa Schamberg & Patrick Robins 🌱  
 Sylvia & Barry Scherr 🌱  
 David Scherr 🌱  
 James Scheuer, Jr. 🌱  
 Eva Schnurr  
 Jonathan Schoder 🏠  
 Donald & Elizabeth Schoenewolf 🌱  
 Kathy Schultz 🌱  
 Andrew Schulz & Mauri Small 🌱  
 Janet Schutzman  
 Schwab Charitable Fund 🌱  
 Adam "Sunny" Schwartz & Sarah Levin 🌱  
 Miranda Schwartz  
 William & Carol Schwarzschild 🌱  
 Barbara Scott 🌱  
 Margaret Porter Scott  
 Spencer & Alexandra Scott  
 Douglas & Suzanne Sears 🌱  
 Marina Seevak  
 Nancy Seidman & Claude Barden 🌱  
 Martin & Janet Seltman 🌱  
 The Sewell Family 🌱  
 Jean M. Sharf 🌱  
 Isabella Sherlock  
 Elana Shever & Jonathan Levine  
 Jeff Shick  
 Diane & Pete Shifflett 🌱  
 Shrieking Meadow Foundation  
 Cathy Shufro  
 Andrew Siegel 🌱  
 Elliott Segrest-Jones  
 Ariel Siller  
 Fred & Jane Sillman

Sillman - Lewis Family  
 Gus Silverman  
 Gina Silvester 🌱  
 Zoe Singer & Aaron Siegel  
 Olly Skeet-Browning  
 Anthony Smith  
 Joan Smith  
 Joyce Smith  
 Katharine Smith 🌱  
 Kathryn A. Smith  
 Marena Smith  
 Lanier Smythe 🌱  
 Will Snyder 🌱  
 Sobel Affiliates - A Brown & Brown  
 Company  
 Sara Somers 🌱  
 Jean & Harold Somerset 🌱  
 Burton & Freya Sonenstein 🏠  
 Mark Sonnenfeld 🌱  
 Nancy Spanier  
 Heather Sparks  
 John Spiegel 🌱  
 Clover Spriggs  
 Susan St. John 🏠  
 Curt Stager 🌱  
 Donald, Ingrid & Sigrid Stanley  
 Lily & Greg Stanton-Marra 🌱  
 Charles Steenburg 🌱  
 Nancy Steenburg 🌱  
 Marlo Stein  
 Carl Steinitz  
 Eva Steinitz  
 Mara Steinitz  
 Becca Steinitz & Sam Putnam 🏠  
 Zevey Steinitz & Charlie Heath  
 Cody Stephens  
 Jane Stephenson & Alison Ryan 🌱  
 Robert & Virginia Stern 🌱  
 Ian Stevens 🌱  
 Kate Stevens 🌱  
 Jack & Leo Stevenson  
 Blake & Vivian Stewart  
 Martha Stitelman  
 Sarah & Andrew Stockwell  
 Karsten Stoeber  
 The Stobely Family  
 Paul & Frances Stone 🌱  
 Doug Stormont  
 The Strand Family  
 Gabriel Strasburger  
 Hazel Streeter  
 Dan Strickler & Alisa Deitz 🌱  
 Gloria Styer 🌱  
 William & Larilee Suiter 🌱  
 Brenda Sullivan & Jeremy Kindall  
 Clifford & Lois Sunflower 🌱  
 Sunrise Mist 🌱  
 John & Georgiann Sutor 🌱  
 Eric Swanson, Virginia Bullock &  
 Family  
 Lily Swartz  
 Nicholas Swerbilov  
 T. Rowe Price Program for Charitable  
 Giving  
 Andrew Tarlow & Katherine Huling  
 Jeffery Anne Tatum 🏠  
 Sidney & Kathryn Taurel Foundation  
 Andrea S. Taylor PhD 🌱  
 Noah & Charis Taylor  
 Catherine Teare 🌱

John, Anne, Joanna & Hugo Tent 🏠  
 Frank Thatcher  
 Philip & Josefa Theodosopoulos  
 Rowan Thorland  
 Hannah Tishkoff  
 Margaret Tobin 🌱  
 Sammie Travis 🌱  
 Triskeles Foundation At Last Ranch  
 Fund  
 TRUIST  
 Milo & Andrea Truppin  
 Semeon Tsalbins & Sarah Connolly 🌱  
 Maureen Turey 🌱  
 The Barbara & John Turitzen Fund  
 Ash Turnbull & Kate Klein  
 The U.S. Charitable Gift Trust 🌱  
 USDA Natural Resources Conservation  
 Services  
 Jennifer VanBenschaten  
 Vanguard Charitable Endowment  
 Program 🌱  
 Juan Camilo Vargas Coy  
 Madeline Verge  
 The Vermont Community Foundation 🌱  
 Philippe & Kate Villers 🌱  
 Karen Vislocky 🌱  
 Naomi Volain  
 Sarah Volkert  
 Catherine Walker  
 Jacob Walker  
 Paget Walker  
 Ann Wakely Wall 🌱  
 Nelle Ward  
 Topher & Marie Waring 🌱  
 Sam Warkov  
 Sandy Warren  
 Sarah Warren 🌱  
 Ellen Wasserman  
 Eve Waterfall & Claire Walton 🌱  
 Ann Weathersby & Michael Cooney  
 Kristi Webb & Todd Woerner 🏠  
 Donald Weiman 🌱  
 Barbara Weinstein & Theodor  
 Liebmann  
 Emanuel & Anna Weinstein  
 Foundation  
 Lawrence Weisberg & Rebecca  
 Johnson  
 Florence Weisblatt 🌱  
 Dano Weisbord & Annie Leonard  
 Bob & Dawn Weisbord  
 Bonnie Welch & Gary Peck  
 Barbara Wells 🌱  
 Julia Wells  
 Phyllis & Michael Wells 🌱  
 Rebecca Wertkin & Praveen  
 Saxena  
 Charles & Marietta Weston 🌱  
 Eva Wetzel  
 M Whitaker  
 Ann-Marie White  
 David White 🌱  
 Kathleen White 🌱  
 Lawrence White  
 Peter & Rebecca Whitmore  
 Clarence Williams 🌱  
 Claudia Williams, Dave, Adam & Zach  
 Witzel  
 Diana & Richard Williams 🏠  
 Eliza Williams 🌱



George Ellen Williams  
 Karen Williams 🌱  
 Marcus Williams  
 Thomas & Sandra Williams 🌱  
 Jonathan Wilson 🌱  
 Robert Wilson 🌱  
 Sally Wilson  
 Alan Wineburgh & Jill Wellenbach 🌱  
 Daniel Wininger  
 Richard Wininger 🌱  
 Robb & Fielding Winters  
 John Wofford 🌱  
 Jane Wohl 🌱  
 Abigail Wolf & Jonathan Weiss 🌱  
 Abigail Wolfson 🌱  
 Jonquil Wolfson & Jeffrey Goldwasser  
 Melissa Hale Woodman & Jim Woodman  
 Nora Woods  
 Robert E. Woolmington, Esq  
 The Wray Bridges Family  
 Charlie Wyatt  
 Lori Wyman & Lewis Battalen  
 Abigail Yaffe  
 Edward & Grace Yaglou 🌱

Carol Yamasaki 🌱  
 Tal Yarden, Patricia Fox & Ivo Yarden  
 Demian Yoon  
 Clara Young  
 Annie Youngerman  
 Paul Zaloom 🌱  
 Ines Zeller Bass & Eric Bass  
 Ken Zimmerman & Jackie Baillargeon  
 Jeff & Linda Zissu  
 Cedar Zobel-Williams

“The confidence my kids have gained at camp is transformative.”

– Camper Parent

## ABOUT THIS LIST

This list of generous contributors reflects gifts made from January 1, 2018 through December 31, 2018. Every effort has been made to ensure accuracy. We encourage you to contact Thomas Henning, Development Director, 802-422-2033 or [thomas@farmandwilderness.org](mailto:thomas@farmandwilderness.org) with any corrections.

## NAMED FUNDS & PLACES

### NAMED ANNUAL FUNDS

The following named funds have been established to support campership on an annual basis:

Anna Lytton Campership Fund  
 Alyssa Robbins Campership Fund

### NAMED ENDOWMENT FUNDS

The following named endowment funds have been established in perpetuity:

Jack and Cappy Bailey Campership Fund  
 Nash Basom Memorial Fund  
 Brevilieri Fund  
 Michael Browner Campership Fund  
 Edward “Teddy” Bright Ebersol Campership Fund  
 Winnie Feise Leadership Fund  
 Howard and Marie Hausman Campership Fund  
 Land Conservation Fund  
 Herman and Gerda Lissner Campership Fund  
 Charles and Hilda Mason Campership Fund  
 Ottaway-Hanzelka Foreign Campership Fund  
 David Sanjek Campership Fund  
 Teen Campership Fund  
 Trustee’s Circle Fund  
 Sam Warren Campership Fund  
 Kenneth B. Webb Fund  
 Susan H. Webb Outdoor Education Fund  
 Jared Zimmerman Campership Fund

### NAMED PLACES AT FARM & WILDERNESS

The following have been named in tribute to and in memory of Farm & Wilderness community members:

### CAMPS & PONDS

Flying Cloud Camp  
 Peggy Dulany Pond

### STRUCTURES

2010 Trustees Barn Day Camp Play Structure  
 Joyce Donnell Greenhouse at Tamarack Farm  
 Al Hicks Cabin at Timberlake  
 Mabel Hicks Cabin at Indian Brook  
 Doug North Shelter at Peggy’s Pond  
 Susan St. John Resource Center  
 Phil’s Shelter  
 Jocelyn Villers Lodge at Saltash Mountain  
 Kenneth Webb Lodge at Timberlake

### PLACES & SPACES


McKey “Mac” W. Berkman Cupola at Tamarack Farm Dairy Barn  
 Leonard Cadwallader Workshop at the Resource Center  
 Mark Gibson Picnic Table at Timberlake  
 Arlene Hennesey Office at Main Office  
 Sonja Johansson Fields  
 “The Joy of the Dance” Weathervane in loving memory of Sam Warren at Tamarack Farm  
 Doug North Library at Timberlake  
 Robert P. Owen Road  
 Jeffery Anne Tatum Garage at the Resource Center  
 Susan H. Webb Library at Indian Brook  
 Susan H. Webb Wildflower Bed & Bench at Indian Brook

### MEMORIAL TREES

All planted in the Memorial Grove in the Indian Brook orchard unless otherwise indicated:

Jack & Cappy Bailey  
 Stacy Cavanaugh  
 Jesse Drooker  
 Edward “Teddy” Bright Ebersol at Timberlake  
 Jeremy Hopkins  
 Eden Kinsey at Timberlake  
 Wendy Reagan  
 Josiah Rich Wendy Reagan  
 Josiah Rich





## TRIBUTES

In 2018 gifts were made in honor, appreciation or recognition of:

Joan "Cindy" Amatniek – Gamry Instruments, Camilla Potter & Frank Fang

Sam Arfer – Witten/Pachman Family

Fredi Balzano – Tracy Balzano & Daniel Genova

Gretchen Boger and Edith & Alice Lank – John & Jennifer Boger

Tulio Browning's 10 years as Director of TL – Anne Hereford

Mickey Carter on the celebration of his birthday – Sue Cirillo, Amy Frisch, Katherine Gamma, Jeff King, Karen Martin – Carter, Diane Renwick

Chantal Deojay – Tim Jursak

Sharon Dilworth's birthday – Susan Baker & Rick Gilkey

Emily D. Fang – Camilla Potter & Frank Fang

Flower Root – Ruth N. Caplan

James Frank, counselor – James & Leslie Frank

Rebecca Geary, Executive Director of F&W – Adam Fawer & Meredith Davis, Sonia & Angel Nieto, Sarah Norton

Seth Gibson – David White

Henry's Happy Birthday! – Mark Petrini & Deborah Jones

Richard Hook & Mari Jordan – Karen Williams

Caleb Hopkins – Rona H. Gregory

Matt Joffe for his 9 seasons as a counselor and more at Timberlake – Pamela L. Malloy

Matthew & Evan Jose (former campers) – Mimi & David Jose

Emily Kish – Sarah & Steve Kish

Sam & Eliza Jane Logan – Susan Ochshorn

Stewart Loving – Gibbard's 50th Birthday – Trish Loving

The Moose Counselors – Iain & Johanna Cockburn

Liza Morse – Alice & Richard Morse

Julia Nason – Katharine Smith

John Porcino, Director of Family Camp – Robert Peck

Yoni Rechtman – Yigal Rechtman & Hara Person

The Ripps children & grandchildren: Max & Oliver Ripps, Samara Plambeck & Elena Shever – Sylvia Ripps

Jackson Roberts – Megan, Chris & Jackson Roberts

Lorraine Rouse – Carolyn Rouse

SAM/Killington Cabin Counselor Ben – The Rothenberg – Azencott Family

SAM campers between 1989 – 1996 – Michelle Golden & Helen Onthank

Meri Steinmetz – Megan Chan

Béa Tarlow – Andrew Tarlow & Katherine Huling

Jeanette Wagner – Natasha Hays

Jonathan Wilson for his thoughtful leadership as F&W's first Chief Operating Officer, whose hard work has resulted in a thriving F&W – Pieter Bohen

Ivo Yarden – Tal Yarden & Patricia Fox





## MEMORIALS

In 2018 gifts were made in memory of:

**Jackson Bailey** – sdf Robert Borgen  
**Nash Basom** – Mariel Hess, Rachel Pecker & Bill Yukstas  
**Hazel Blake** – Elspeth M. Reagan  
**Mary Brandt** – E. Michael Brandt & Mary Bowne  
**Kathryn Wallace Cramer** – Diane & Pete Shifflett  
**Joe Eagle Feather** – Anthony Smith  
**Margaret Fisher** – Thomas & Carol Ann Fisher  
**Forrest Forsythe** – Lee Forsythe & Molika Suy Forsythe, Scott Forsythe  
**William Gadon, camper** – Nicole Gadon  
**Mark Gibson** – David White  
**Dorothy Greenberg** – Daniel Wininger  
**Al Hicks** – Anonymous, James & Jennifer Akula, Jessica Alper, Kate Braemer, Mickey & Marya Carter, The Ergoods, Leslie G. Fields, Jen Flaster, Catherine Harris & Andres Rodriguez, Isabel & Lynda Hulkower, Emily Jackson, Vincent Jenulevich, Tessa Kleeman, Jan & Cindy Klotz, Sean & Jennifer Morrison, Rich and Chrissie Parker, Dr. Linda S. Randall, Deborah Roose & David Snyder, The Sewell Family, Joan Smith, Jean & Harold Somerset, Nancy Spanier, Kate Stevens, Paget Walker, Lawrence Weisberg & Rebecca Johnson, George Ellen Williams, Robert Wilson  
**Jean Inman** – Kate Inman  
**Jeff and George** – Joyce Rich  
**Judith Cohen, Mother of Amanda & Jessica** – Michael & Amanda Lapham, Jessica Palmer  
**Jean Kapuscik** – Jenn Kapuscik & Barb Siegel  
**Eden Kinsey** – Todd Daloz & Susannah Walsh  
**V. Benjamin Lang** – Jon Lang

**Jim Locke** – Sandy Warren  
**Rob Loud** – Jean Mallary  
**Anna Mirabai Lytton** – Katherine Rabinowitz & Rameshwar Das  
**Delia Martinez** – Peter Meyer & Amelia Koch  
**Doug North** – Ian Ramsey-North  
**George Oberst** – Jane Wohl  
**Irwin Post** – Melissa Post  
**Clifford Josiah Rich** – Joyce Rich  
**Alyssa Amelia Robbins** – Carolyn A. Ristau, William D. Knight & Dan Robbins, Donald Robbins  
**Dave Sanjek** – Charles de Sieyes & Carol Ward, Nicholas & Evan de Sieyes, David Martin, David B. & Leine Spohngellert  
**Bert Schneiweiss** – Joyce Smith  
**George Silvester** – Gina Silvester  
**Jay R. Stager** – Curt Stager  
**Philip Tobin** – Margaret Tobin  
**Sam Warren** – Barbara Autio  
**Robert Howard Webb** – Anonymous, Harvard Class of 1955 Class Assistance Fund, Sonja Johansson, Leslie Lipkind, Annette Perot & Kate Thieda, Sillman-Lewis Family, Fred & Jane Sillman, Robert E. Woolmington, Esq  
**Susan H. & Kenneth Webb** – Doris Bouwensch, Cynthia Davidson, David White  
**Besty Welch** – Bonnie Welch & Gary Peck  
**Robert F. Winne** – David White  
**Kay Y. Young** – Melinda Agee  
**Jared Zimmerman** – Ken Zimmerman & Jackie Baillargeon





FARM & WILDERNESS

401 Farm and Wilderness Road

Plymouth, VT 05056

[www.farmandwilderness.org](http://www.farmandwilderness.org)

## OUR MISSION

- To grow the seeds of courage & integrity in all participants
- To offer rugged, hands-on, outdoor adventure & challenge
- To encourage hard work & joyful play
- To create community that values long term stewardship of our environment

## OUR VALUES

In our Values, we reflect our long Quaker history and association. We strive to honor the “Light of the Spirit” in every person; our belief that each individual brings value to the community through unique gifts and strengths.

Simplicity • Peacemaking • Integrity • Community • Equity • Service

